

# Frozen Food / Ice Cream Glass Door Merchandiser

Advantage<sup>series</sup>

Tyler's N5FGA Glass Door Case brings flexible merchandising to your frozen foods department with a wide variety of energy-efficient door and lighting options.

**N5FGA**



CROSS SECTIONS & FOOTPRINT

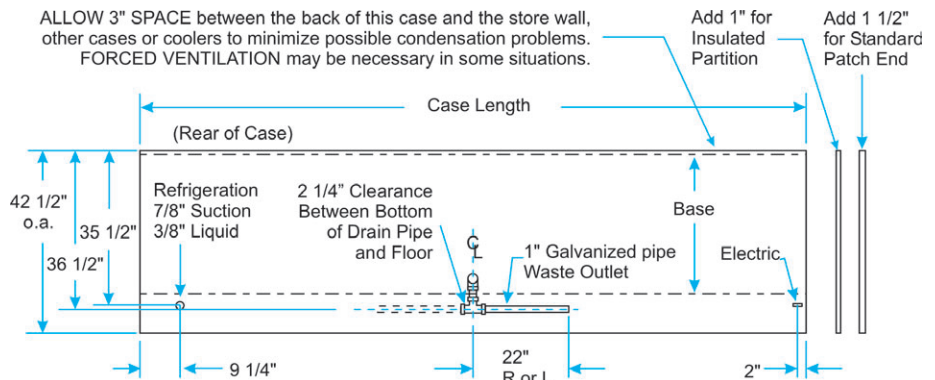
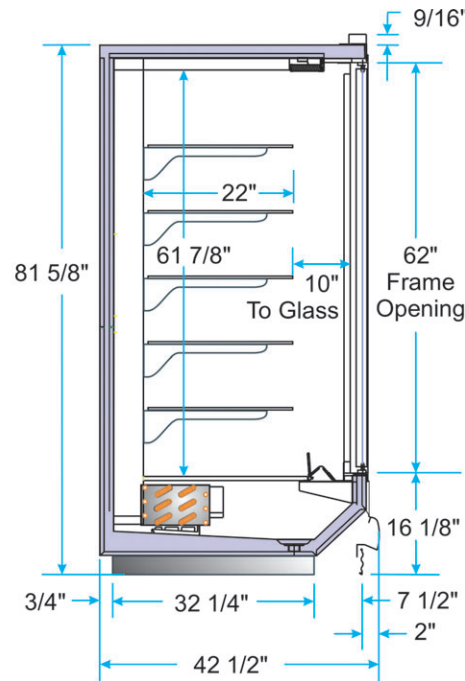
Features & Benefits

- Energy efficient copper tubing and aluminum fin coils ensure product integrity.
- Recessed shelving allows shoppers to open a single door and have access to adjacent shelves.
- Solid steel base structure adds strength and durability.
- Easily removable front, top and rear ducts and discharge-air grid enhance ease of sanitation.
- Easy clearing of fan assembly for access to coil and drain pan.
- Door frame systems are reversible, heat reflective, and contain our PRISM vertical T8 lighting.
- Electric defrost.

Options

- Choose between our standard or high-efficiency door frame system.
- ECM fan motors for additional energy savings.
- 3 or 6 position shelf brackets.
- Choice of solid shelving or powder-coated shelf screens.
- Gas defrost.

All dimensions are nominal. Specifications are subject to engineering changes without notice.



Case Length	No. of Doors	Cubic Capacity N5FGA (cu. ft.)*
62"	2	46.9
92 7/16"	3	69.9
122 7/8"	4	93.0
153 5/16"	5	116.0

\* Cubic capacity is based on four rows of 22" shelves.



IN ACCORDANCE WITH SANITATION PROCEDURES



Carrier

A United Technologies Company

www.tylerrefrigeration.com  
e-mail tylercorp@carrier.utc.com  
1-800-992-3744

A member of the United Technologies Corporation family. Stock symbol UTX.



A Division of  
Carrier Commercial Refrigeration, Inc.  
1329 Lake Street  
Niles, MI 49120

TY863  
06/04  
Printed in U.S.A.