

# D2MG 2 Deck Fresh Meat/ Deli Merchandiser

Tyler Refrigeration Corporation

915 Btuh/Ft. @ + 15°F Suction & + 24°F Entering Air Temp.

CASE MODELS R' 12'	LINEAL FEET	75°F (24°C) Store 1000 Btuh/hr Req'd.	CONDENSING UNIT SELECTION CHART <b>R-22</b>					LINE SIZING					ELECTRICAL DATA						
			AIR ENTERING THIS CONDENSING UNIT THN (Remote) Units can be selected provided Condenser is sized for 10-15F TD or less					SUCTION LINE					LIQUID	208V DEFROST			115 VOLT DATA		
			85F	90F	95F	100F	105F	M	E	T	E	R		One Phase Total Amps	One Phase Total Amps	3 Ph High Leg Amps	Fan Amps HEF/STD (A)	STD. A/S Amps (B)	STD. Light Amps (C)
			30C	32C	35C	38C	41C	15	30	45	60	75							
	6	5.5										3/8	6.5	TG-30		.74	1.0	.2	1.6
1	8	7.3			110-22S							5 5/8"	6.9			.74	1.0	.3	1.8
	12	11.0			150-22S								10.3			1.11	1.5	.5	2.7
2	16	14.6			190-22S							7 7/8"	13.8	TG-3-30	12A	1.48	2.0	.6	3.6
1	20	18.3			200-22S								17.2			1.85	2.5	.8	4.5
	24	22.0			300-22H								20.6			2.22	3.0	1.0	5.2
2	28	25.6			300-22S								24.1			2.59	3.5	1.1	6.3
1	32	29.3			400-22S								27.5	TG-40	18A	2.96	4.0	1.3	7.0
	36	32.9			D501-22S								30.9			3.33	4.5	1.5	8.1
2	40	36.6			D551-22S								34.4	TG-50	21A	3.70	5.0	1.6	8.8
1	44	40.3											37.8			4.07	5.5	1.8	9.9
	48	43.9											41.2	TG-3-40	25A	4.44	6.0	2.0	10.8
2	52	47.6			D741-22S								44.7			4.81	6.5	2.1	11.7

- \* CASE CIRCUITS: (115-1-60) - (A) Includes Standard or HEF (Hi-Efficiency) fans - (B) Includes Standard glass retainer anti-sweat heater only - (C) Includes 2 rows lighted shelves + discharge air anti-sweat
- \* DEFROST CIRCUITS: OFF CYCLE defrost is standard (use TC defrost module) - OPTIONAL ELECTRIC defrost uses a single or 3 phase 208V circuit - OPTIONAL HOT GAS defrost uses 2 control wires @ 208V per lineup
- \* ALL shelving MUST HAVE gasketing.
- \* RATINGS for Produce usage should be: +25°F Suction, +33°F Entering Air and 702 BTUH/FT. STANDARD DEFROST is 2 per day @ 45 Min. Failsafe and 55° Termination Temp. Pressure Control Cut In @ 58-64# and Cut Out @ 30-33# (R-22).

### ANNUAL COMPARATIVE OPERATING COST PER FOOT OF CASE (C.O.C.)

CASE	Fans/HEF*	A/S Heat	Lights	208V Defrost	Condensing Unit	TOTALS††	CONTROL SETTINGS (R-22)				PRESSURE
							P/Day	Mode	Failsafe	Term.	
	\$ .77/.66	\$ .40	\$ .88	\$ 1.30(opt)	\$ 10.07	\$ 12.12					52-56#
8'	70w/60w	36w	200w	1430w	w/Opt. HEF Motors	\$ 12.01	2	Timed Off	60 Min.	35°	Cut Out:
12'	105w/90w	55w	240w	2145w	<b>NET SAVINGS</b>	\$ .11	2	Electric	36 Min.	50°	26-29#
							3-4	Hot Gas	12-15 Min.	70°	

Case Ft. x C.O.C. = "Cost per Year" @ 1c/KWH. USE TOTALS TO COMPARE CASES & OPTIONS! \*HEF= Hi-Efficiency Fans. ††@1¢/KWH (208V Def. not incl.)

CASE BTUH REQUIREMENTS are calculated to produce approximately the indicated entering case air temp with absolute maximum operating ambient limits of 75F & 55% RH. SUCTION LINE SIZING: Select the point of intersection of the case line-up and the equivalent footage. Allow for all fittings in addition to the actual line length. STEP SIZING is suggested for selections falling in the first half of a size range. Pipe one size smaller can be used on the 50' of the run closest to the cases when the entire run is 100 equivalent feet or more. LIQUID LINE SIZING is based on 5lb. pressure drop in 150' of line. See complete line size charts in front of the TYLER SPEC GUIDE BOOK.

The information contained herein is based on technical data and tests which we believe to be reliable and is intended for use by persons having technical skill, at their own discretion and risk. Since conditions of use are outside Tyler's control, we can assume no liability for results obtained or damages incurred through the applications of the data presented. SPECIFICATIONS ARE SUBJECT TO CHANGE WITHOUT NOTICE. Printed in the U.S.A.

Tyler Spec Sheet

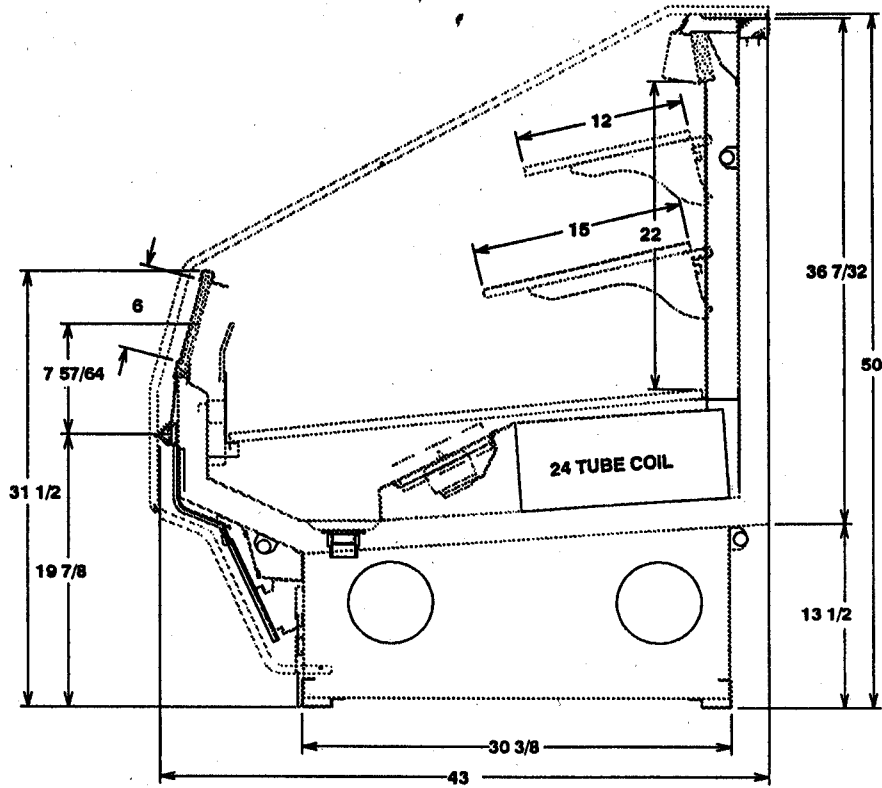
M-22

2 DECK FRESH MEAT/DELI

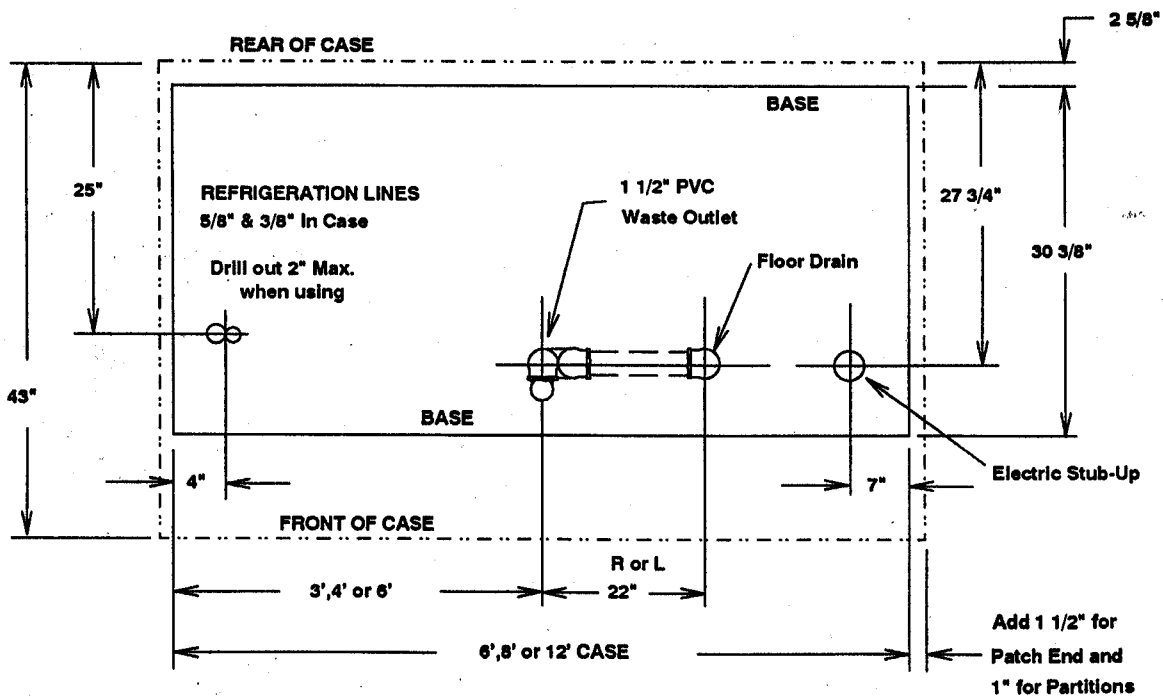
D2MG

SG 02051 Repl. 12/92 Rev. 11/93

# D2MG 2 Deck Fresh Meat/ Deli Merchandiser



**CROSS SECTION**



**FLOOR PLAN**