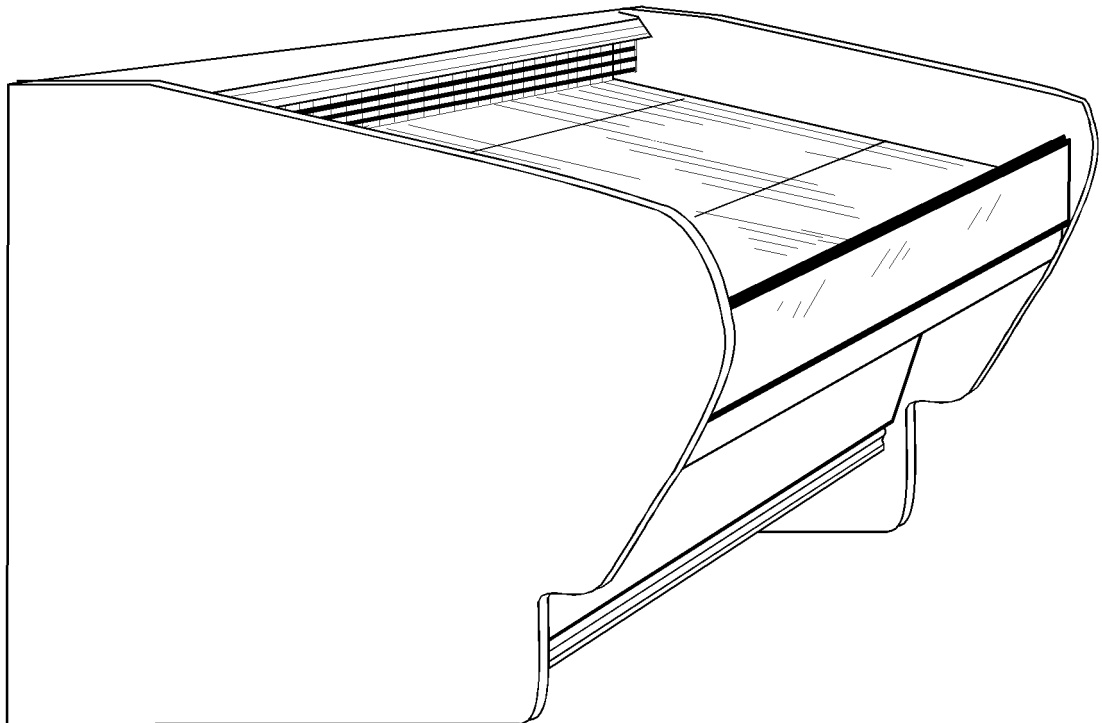


TYLER

series
Advantage



Installation & Service Manual



LDG

TOP DISPLAY CHEESE MERCHANDISERS Medium Temperature Refrigerated Display Cases

This manual has been designed to be used in conjunction with the General Installation & Service Manual.

Save the Instructions in Both Manuals for Future Reference!!

This merchandiser conforms to the Commercial Refrigeration Manufacturers Association Health and Sanitation standard CRS-S1-96.

PRINTED IN U.S.A.	Specifications subject to change without notice.	REPLACES EDITION	10/96	ISSUE DATE	1/97	PART NO.	9027544	REV.	A
-------------------	--	------------------	-------	------------	------	----------	---------	------	---

CONTENTS

	<u>Page</u>
Specifications	
LDG Specification Sheets	4
Pre-Installation Responsibilities	(See General I&S Manual)
Installation Procedures	
Carpentry Procedures	6
Case Pull-Up Locations	6
Electrical Procedures	6
Plumbing Procedures	(See General I&S Manual)
Refrigeration Procedures	(See General I&S Manual)
Defrost Information	6
Defrost Control Chart	6
Installation Procedure Check Lists	(See General I&S Manual)
Wiring Diagrams	6
LDG Domestic & Export (50Hz) 6', 8' and 12' Case Circuits	7
Cleaning and Sanitation	(See General I&S Manual)
Service Instructions	
Preventive Maintenance	(See General I&S Manual)
Front Glass Replacement	8
Fan Blade and Motor Replacement	(See General I&S Manual)
Color Band and Bumper Replacement	(See General I&S Manual)
Parts Information	
Cladding and Optional Trim Parts List	8
Operational Parts List	10
TYLER Warranty	(See General I&S Manual)

The following Medium Temperature Cheese and Deli Merchandiser models are covered in this manual:

MODELS	DESCRIPTION
LDG	6', 8' & 12' GLASS FRONT TOP DISPLAY CHEESE MERCHANDISER

SPECIFICATIONS

LDG Top Display Cheese Merchandiser Specification Sheets

MODEL	LDG
USAGE	CHEESE
BTUH/FT	475
SUCTION*	+25F
ENTER AIR*	+29F

NOTE: FOR COMPRESSOR SIZING INFORMATION REFER TO THE "GOLD" SECTION & FOR LINE SIZING INFORMATION REFER TO THE "BUFF" SECTION OF THE TYLER SPECIFICATION GUIDE.
 THE ABOVE RATINGS ARE FOR COMPRESSOR SELECTION ONLY. FOR ENERGY CALCULATION DATA REFER TO THE ENERGY SECTION.

DEFROST CONTROL			PRESSURE SETTING		EPR SETTINGS	
PER DAY	MODE	TIME	CUT IN	CUT OUT	R22	R404A
2	TIME OFF	60 MIN.	53# @ R22	40# @ R22	43	---
			67# @ R404A	51# @ R404A	---	55

CASE-TO-CASE SUCTION LINE SUB-FEED BRANCH LINE SIZING											
	8'	12'	16'	20'	24'	28'	32'	36'	40'	44'	48'
R22	1/2"	1/2"	5/8"	5/8"	5/8"	7/8"	7/8"	7/8"	7/8"	7/8"	7/8"

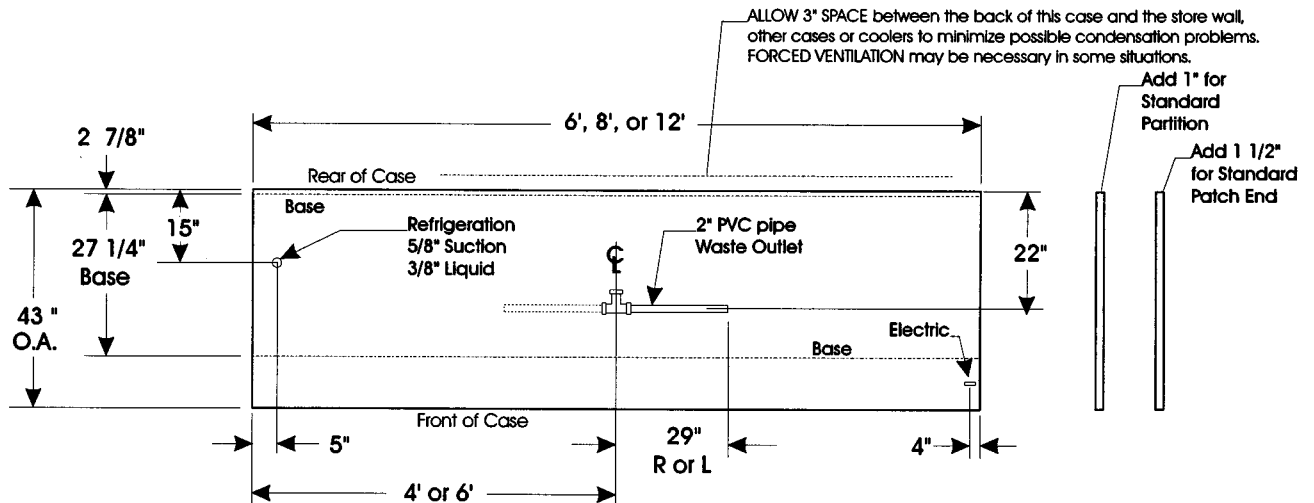
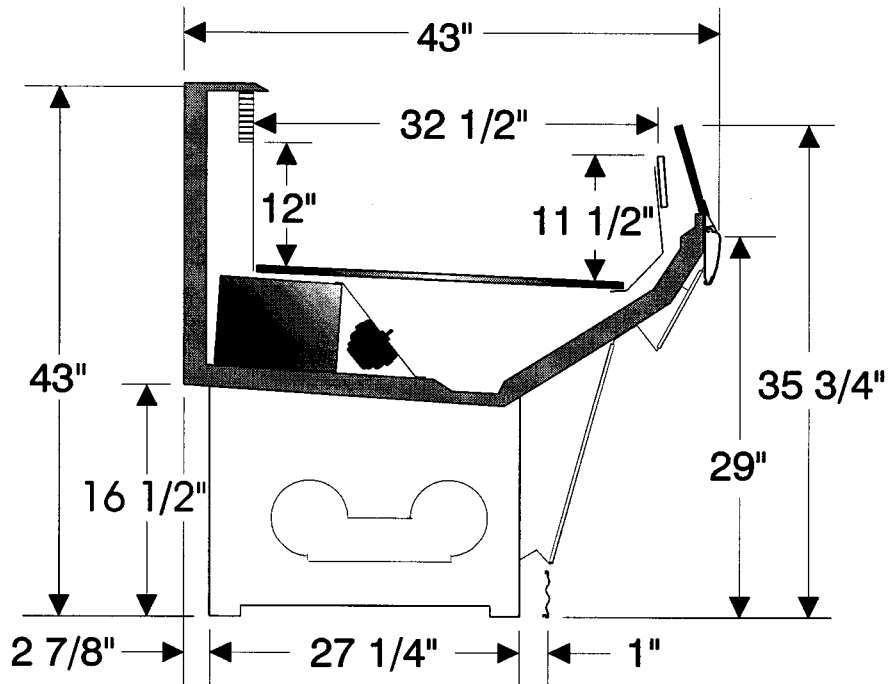
CASE BTUH REQUIREMENTS are calculated to produce approximately the indicated entering air temperature with absolute maximum operating ambient limits of **75F & 55RH**.

The information contained herein is based on technical data and tests which we believe to be reliable and is intended for use by persons having technical skill, at their own discretion and risk. Since conditions of use are outside Tyler's control, we can assume no liability for results obtained or damages incurred through the applications of the data presented. SPECIFICATIONS ARE SUBJECT TO CHANGE WITHOUT NOTICE.

Corel VENTURA 5.0 - LDG.PUB

LDG Top Display Cheese Merchandiser

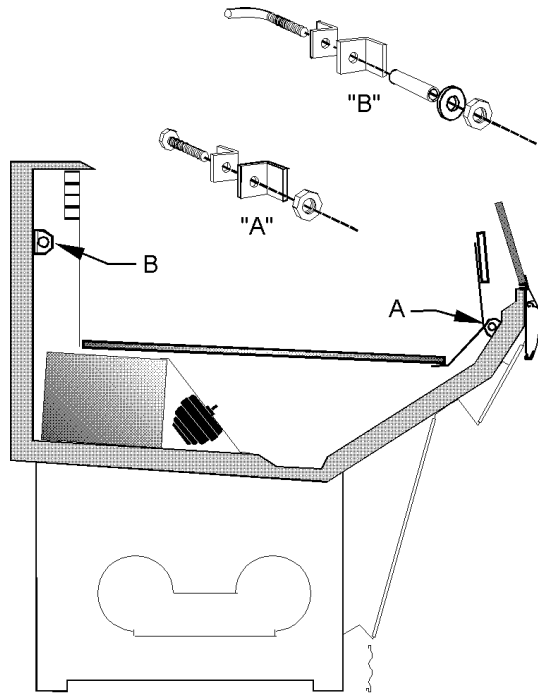
120 VOLT ELECTRICAL DATA (AMPS)		
LENGTH	STANDARD FANS	ECM FANS
6'	.5	.2
8'	1.0	.4
12'	1.5	.6



INSTALLATION PROCEDURES

Carpentry Procedures

Case Pull-Up Locations



The LDG models have two pull-ups at each end of the case. Pull-ups A and B are located as shown and should be installed and tightened starting with A and finishing with B.

See "General I&S Manual" for line-up assembly instructions.

Electrical Procedures

Electrical Considerations

CAUTION

Make sure all electrical connections at components and terminal blocks are tight. This will prevent burning of electrical terminals and/or premature component failure.

NOTE

The raceway houses the electrical wiring and components for the case. Since the lower front cladding is shipped loose, the raceway has immediate access.

Case Fan Circuit

This circuit is to be supplied by an uninterrupted, protected 120V circuit. The case fan circuit is not cycled during defrost on any of these models.

Self-Contained Circuit

LDG cases are available in self-contained units. Information pertaining to self-contained units should be obtained directly from TYLER Refrigeration.

Defrost Information

See "General I&S Manual" for operational descriptions for Off Time defrost control.

Defrost Control Chart

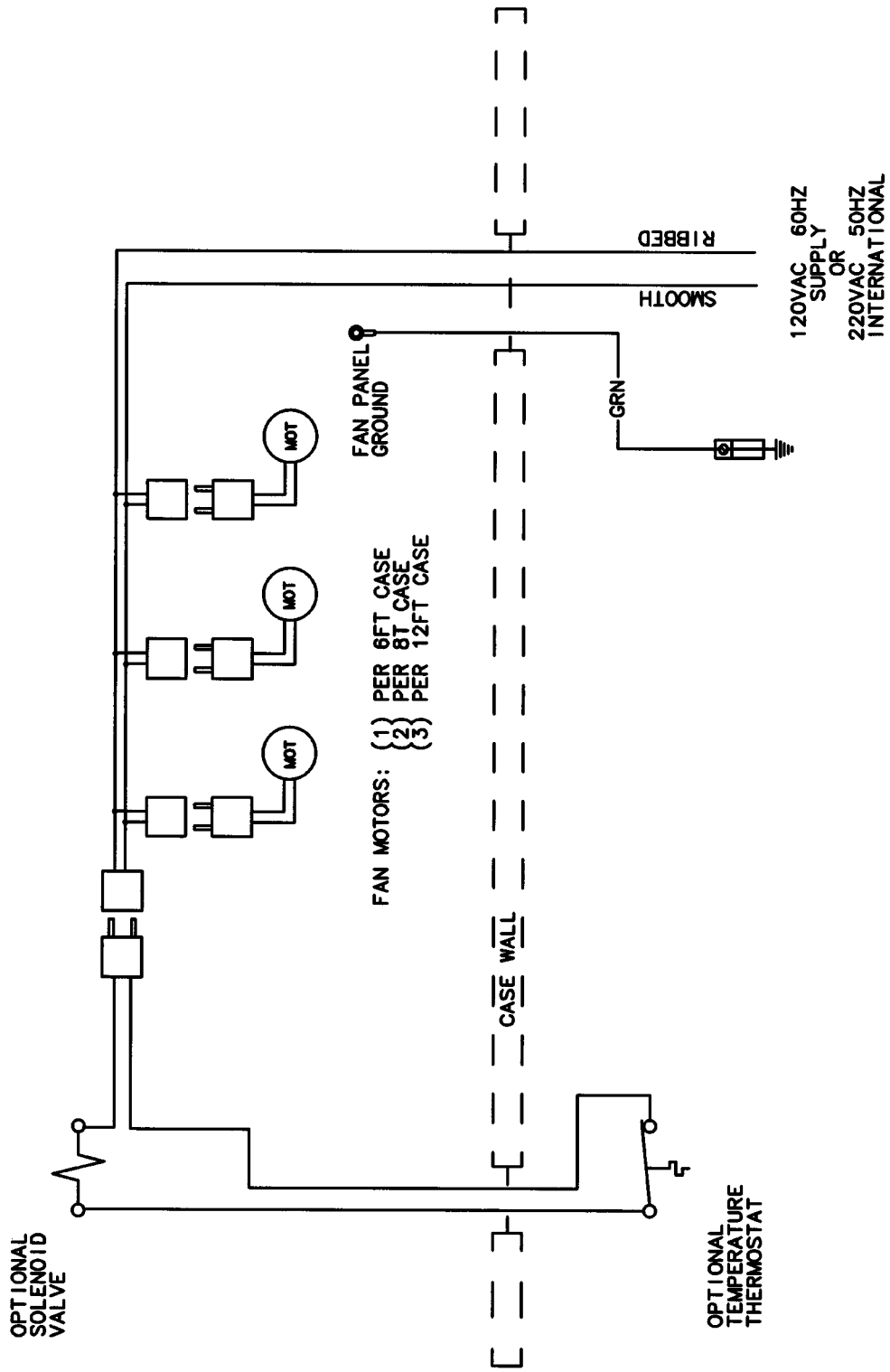
Defrost Type	Defrosts Per Day	Defrost Duration (Min)	Term. Temp.
Off Time	2	60	-----

WIRING DIAGRAMS

ELECTRICIAN NOTE - OVERCURRENT PROTECTION

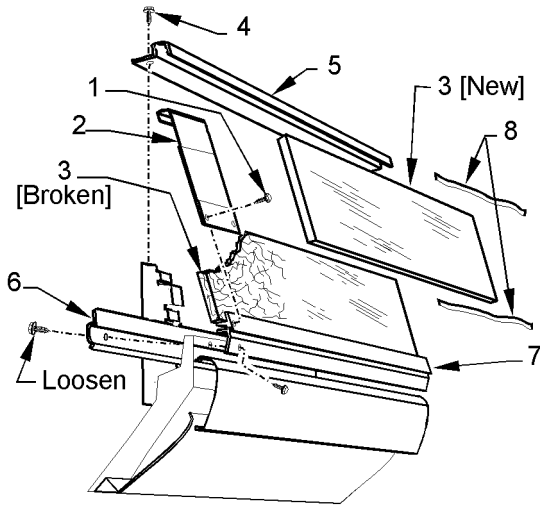
120V circuits should be protected by 15 or 20 Amp devices per the requirements noted on the cabinet nameplate or the National Electrical Code, Canadian Electrical Code - Part 1, Section 28. 208V defrost circuits employ No. 12 AWG field wire leads for field connections. On remote cases intended for end to end line-ups, bonding for ground may rely upon the pull-up bolts.

The following wiring diagram on page 7 covers the LDG case circuits.



SERVICE INSTRUCTIONS

See "General I&S Manual" for fan blade & motor and color band & bumper replacement instructions.



Front Glass Replacement

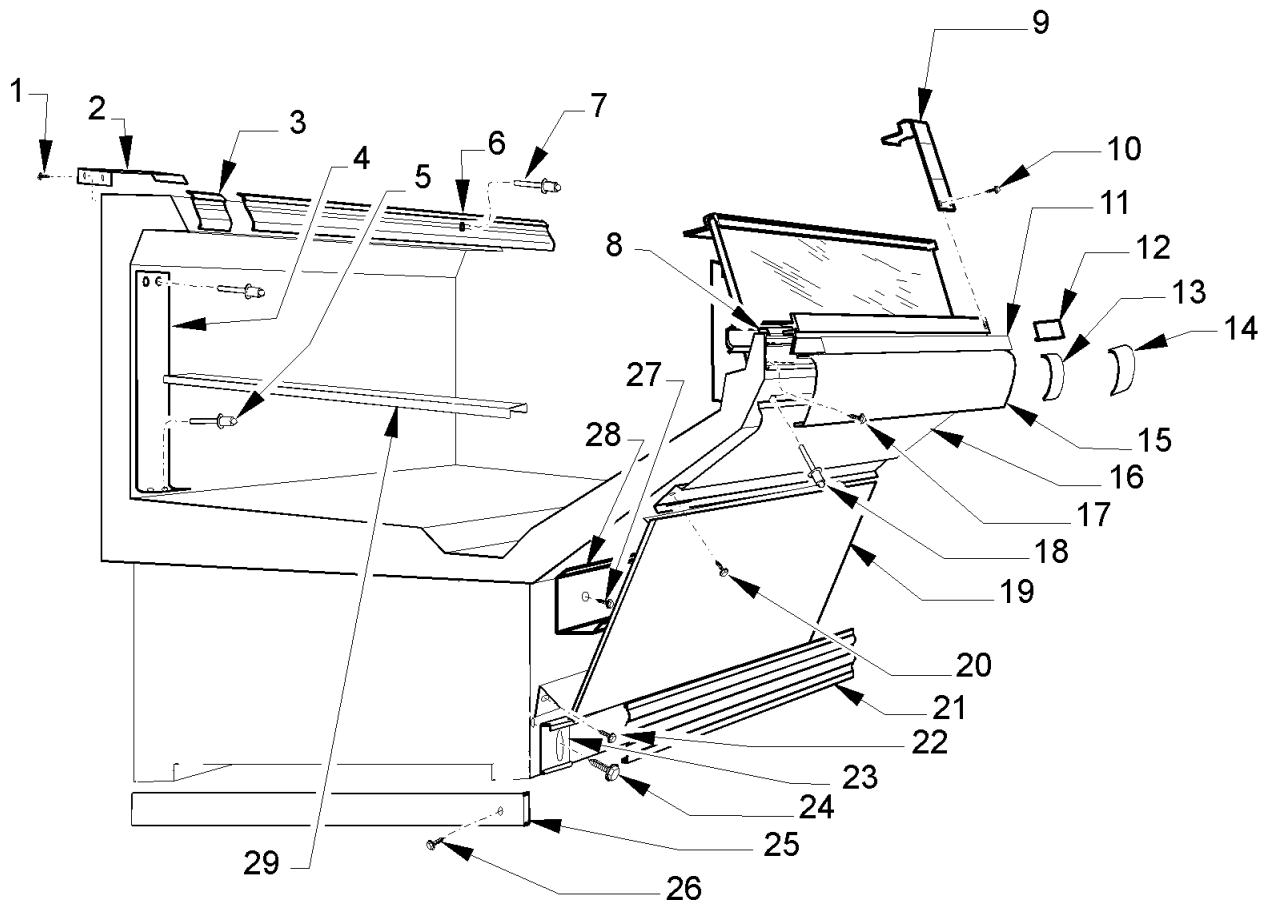
1. Remove screw (1) and glass joint trim (2) from both joints of the broken glass (3).
2. Remove screws (4) and glass trim rail (5) from top of glass (3).
3. Loosen rear retainer (6) and remove broken glass (3) from glass retainer assembly (7).
4. Apply sealant tape (8) to top and bottom edge of new glass (3).
5. Position new glass (3) in glass retainer assembly (7) and secure by tightening rear retainer (6).
6. Install glass trim rail (5) with screws (4) over top edge of new glass (3).
7. Install glass joint trim (2) with screw (1) over the joint areas of glass (3).

PARTS INFORMATION

Cladding and Optional Trim Parts List

Item	Description	6'	8'	12'
1	Screw	5619204 (4)	5619204 (6)	5619204 (8)
2	Upper Rear Riser Trim	5207659	5207581	5207582
3	Card Moulding Joint Trim	5941919	5941919	5941919
4	Rear Duct Joint Trim	5964735	5964735	5964735
5	Rivet	5104702 (4)	5104702 (4)	5104702 (4)
6	Card Moulding	5236878	5236930	5236936
7	Rivet	5104702 (5)	5104702 (6)	5104702 (8)
8	Bumper Retainer	9025052	9025058	9025061
9	Glass Joint Trim	9027848	9027848	9027848
10	Screw	5048626 (2)	5048626 (2)	5048626 (2)
11	Color Band	9020968	9020971	9020972
12	Color Band Backer	9025982	9025982	9025982
13	Bumper Backer	-----	color per order	-----
14	Bumper End Trim	-----	color per order	-----
15	Bumper	-----	color per order	-----

Item Description	6'	8'	12'
16 Upper Front Cladding, Painted	9025245	9025205	9025206
17 Shoulder Screw	9025833 (16)	9025833 (20)	9025206 (24)
18 Rivet	5104702 (3)	5104702 (4)	5104702 (4)
19 Lower Front Cladding, Painted	9026381	9026382	9026383
20 Screw	5183536 (5)	5183536 (6)	5183536 (8)
21 Kickplate	-----	color per order	-----
22 Screw	5183536 (6)	5183536 (8)	5183536 (12)
23 Kickplate Support	9025652 (3)	9025652 (4)	9025652 (5)
24 Screw	5205213 (3)	5205213 (4)	5205213 (5)
25 LH End Close-off, Painted	9022459	9022459	9022459
RH End Close-off, Painted	9022466	9022466	9022466
26 Screw	5048626 (2)	5048626 (2)	5048626 (2)
27 Screw	5183536 (4)	5183536 (6)	5183536 (6)
28 Raceway	9025126	9025127	9025128
29 Horizontal Joint Trim	5208174	5208174	5208174



Operational Parts List

Case Usage	Domestic			Export		
	115 Volt 60 Hertz			220 Volt 50 Hertz		
Case Size	6'	8'	12'	6'	8'	12'
Fan Motor	5125532 5 Watt	5125532 5 Watt	5125532 5 Watt	5126572 5 Watt	5126572 5 Watt	5126572 5 Watt
Fan Motor Brackets	5213132	5213132	5213132	5213132	5213132	5213132
Fan Blades (6" 21° 3B)	5105621	5105621	5105621	5105621	5105621	5105621

For information on operational parts not listed above contact the TYLER Service Parts Department.