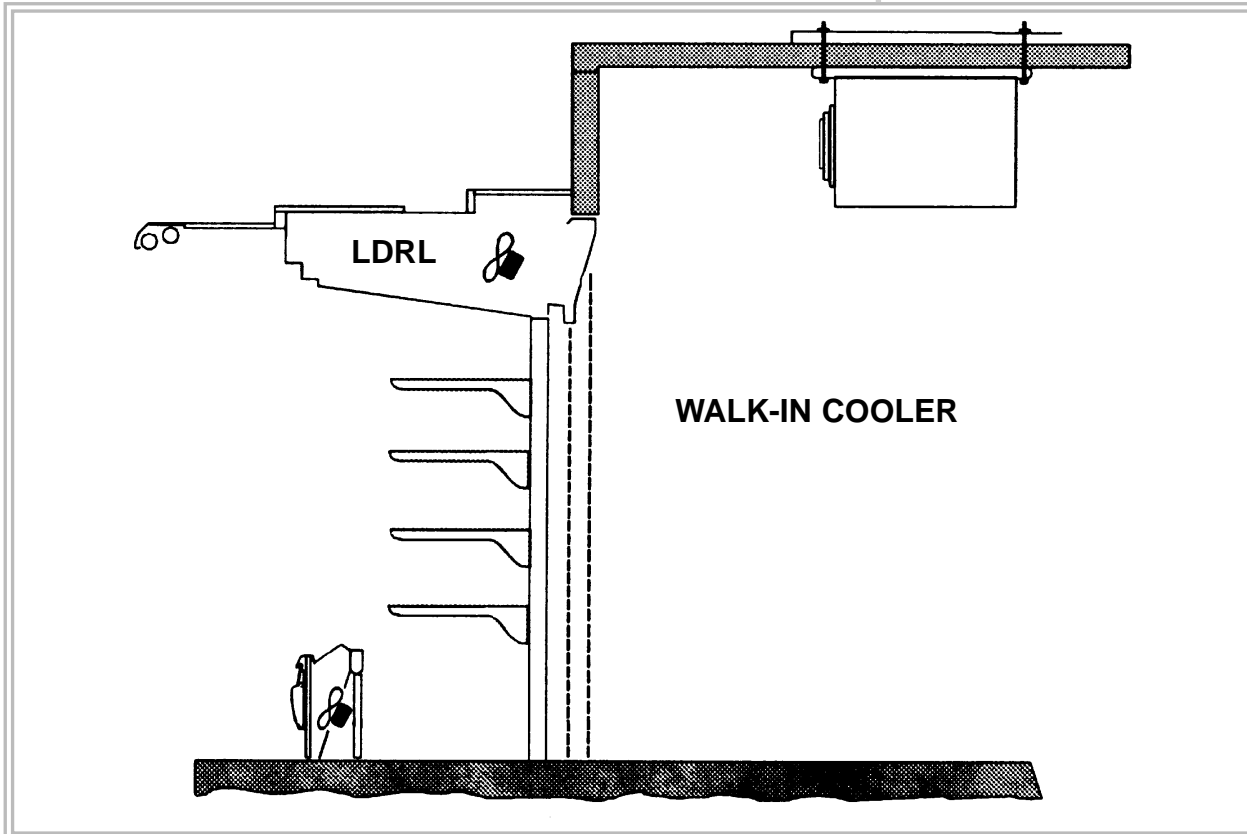


Replacement Parts ^{series} Advantage



Rear Load Roll-in Dairy Merchandiser

Production began October 1, 1996

9000244	LDRL8	Med-Temp	8' Rear Load Roll-in Dairy Merchandiser
9000245	LDRL12	Med-Temp	12' Rear Load Roll-in Dairy Merchandiser

LDRL



Issue date: AUGUST 1998

Replaces issue:

Part number: 9030987

Revision:

Tyler Refrigeration Corporation Niles, MI 49120
Parts information subject to change without notice
Printed in U.S.A.

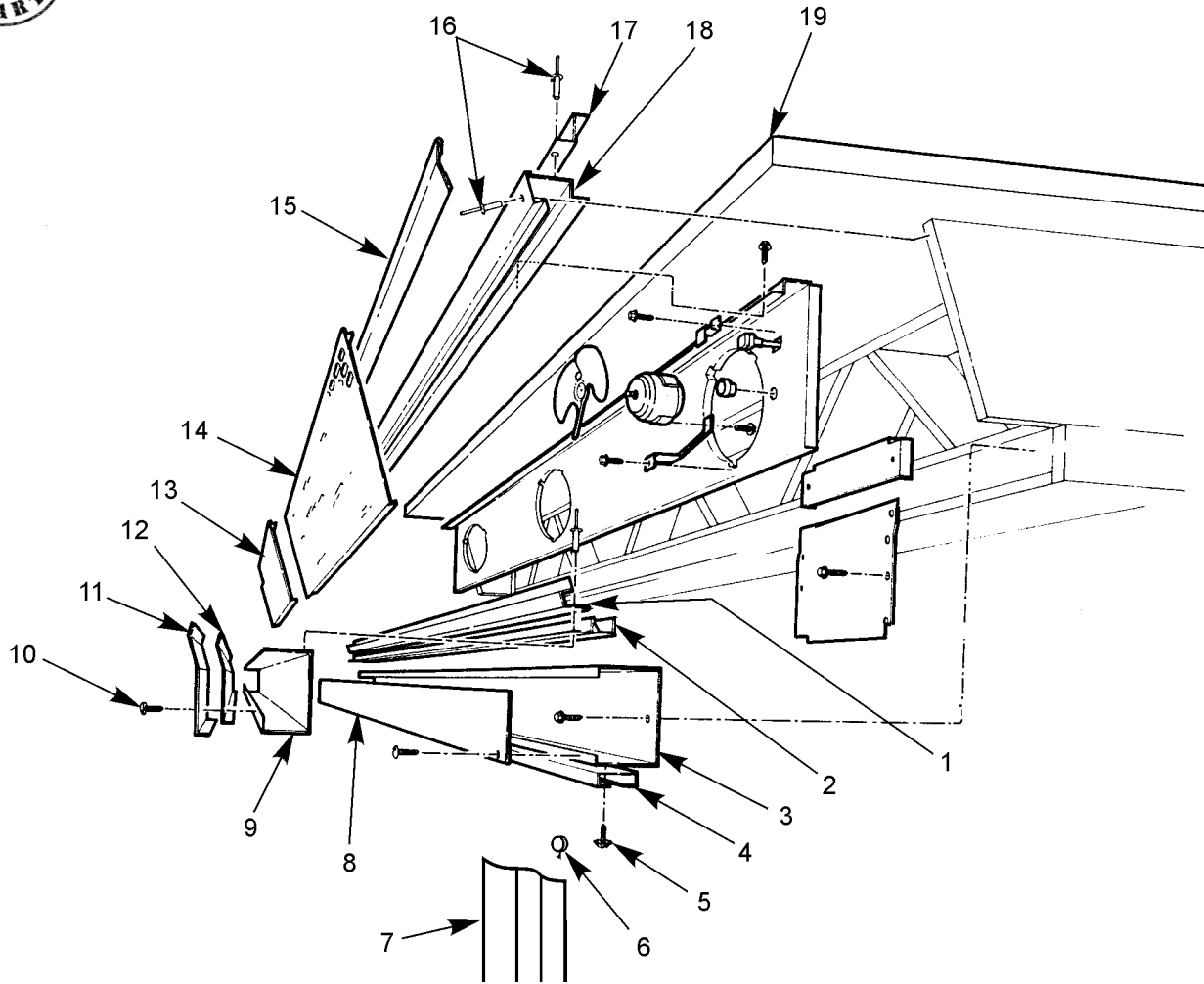


CONTENTS

	<u>Page</u>
Structural Components	
Top Shelf Assemblies	S1
Top Shelf Components	S2
Canopy Assemblies	
Standard Canopy	S3
Optional Short Canopies	S4, S5
Front Panel Assemblies with Cladding	S6 - S8
Patch Ends, Partitions and Dividers	
Solid Patch Ends	S9, S10
Partition	S11
 Electrical System Components	
Wiring Harnesses	
Wiring and Components - LDRL	E1
Fan Systems	
Top Shelf Fan Panel	E2
Bottom Front Fan Panel	E3
Top Light Assemblies	E4
 Refrigeration System Components	
Coil Assemblies	R1
Optional Hot Gas Defrost System	R2
 Optional Case Accessories	
Hanging Uprights	A1, A2
Shelf Assemblies	A3 - A4
Base Shelf Cart, Egg Cart and Milk Dolly	A5
Shelf Divider, Shelf End Stop and Thermometers	A6



**STRUCTURAL COMPONENTS
TOP SHELF ASSEMBLIES - LDFL**

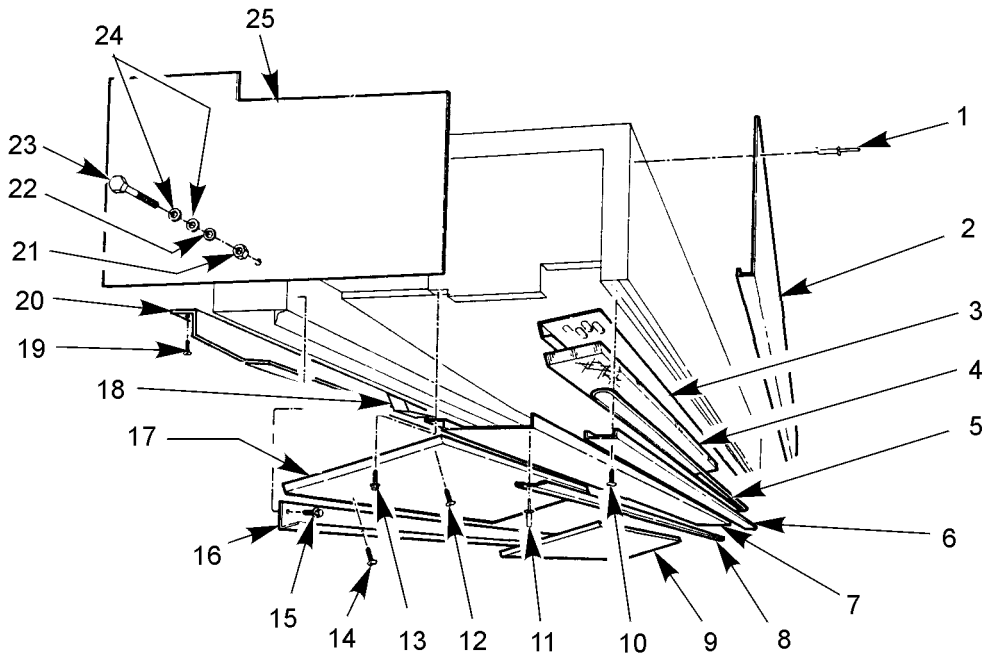


8' and 12' Merchandiser

Item	Part No.	Quantity		Description	Item	Part No.	Quantity		Description
		8'	12'				8'	12'	
*	5190214	1	-	Top Shelf Bench Assy.	9	5237011	1	-	Electrical Raceway
*	5190215	-	1	Top Shelf Bench Assy.		5237012	-	1	Electrical Raceway
1	5089995	1	-	Lower Rear Close-off	10	5183536	9	9	Screw
	5089996	-	1	Lower Rear Close-off	11	5237020	1	1	Electrical Raceway Plate
2	5089989	1	-	Lower Fan Panel Support	12	5237013	1	-	Electrical Raceway Cover
	5089990	-	1	Lower Fan Panel Support		5237014	-	1	Electrical Raceway Cover
3	5089991	1	-	Drain Raceway	13	5196244	1	1	Air Intake Grille, RH
	5089992	-	1	Drain Raceway		5218812	1	1	Air Intake Grille Trim, 2 3/4"
	5183536	9	15	Screw		5218813	1	1	Air Intake Grille Trim, 3"
4	5623855	1	-	Curtain Track	14	5187839	1	1	Air Intake Grille
	5623856	-	1	Curtain Track	15	5181116	1	-	Top Shelf & Cooler Joint Trim
5	5619204	8	12	Screw		5181117	-	1	Top Shelf & Cooler Joint Trim
*	5623858	1	-	Rear Curtain Assy.	16	5105037	28	44	Rivet
*	5623859	-	1	Rear Curtain Assy.	17	5089981	1	-	Fan Panel Close-off Retainer
6	5623854	22	33	Curtain Carrier		5089984	-	1	Fan Panel Close-off Retainer
7	5623857	2	3	Curtain, White	18	5089983	1	-	Upper Rear Close-off
	5932279	2	3	Opt. Curtain, Black		5089984	-	1	Upper Rear Close-off
8	5994223	1	-	Drain Raceway Cover	19	5180675	1	-	Fan Panel Close-off Cover Assy.
	5994224	-	1	Drain Raceway Cover		5180676	-	1	Fan Panel Close-off Cover Assy.
	5053985	12	18	Screw					



STRUCTURAL COMPONENTS - (CONT'D)
TOP SHELF COMPONENTS - LDRL

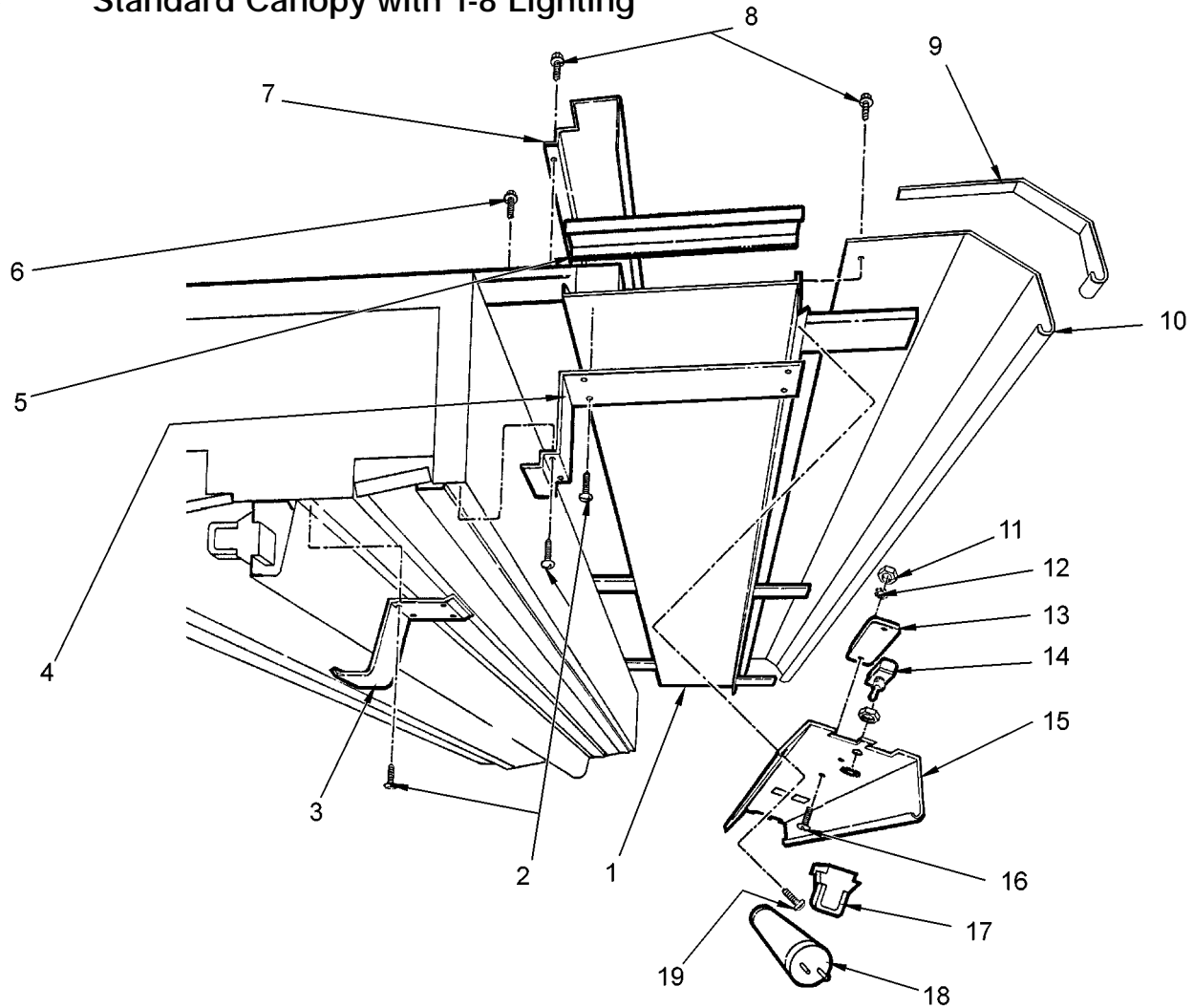


8' and 12' Merchandiser

Item	Part No.	Quantity		Description	Item	Part No.	Quantity		Description
		8'	12'				8'	12'	
1	5105037	11	15	Rivet	9	5055508	1	-	Upper Center Tray Assy.
2	5210991	1	-	Front Cladding, Ptd.		5055509	-	1	Upper Center Tray Assy.
	5210992	-	1	Front Cladding, Ptd.	10	5619204	15	34	Screw
	5210999	1	1	Front Cladding End Trim	11	5104702	11	15	Rivet
	5210994	1	1	Opt. Front Cladding	12	5216713	7	8	Screw
				End Trim, Short Canopy	13	5183536	15	26	Screw
	5183536	2	2	Screw (per trim)	14	5183536	15	26	Screw
3	5196237	1	-	Air Restrictor	15	5100217	8	10	Screw
	5196238	-	1	Air Restrictor	16	5089968	1	-	Tray Support
4	5208580	2	3	Air Grid		5089969	-	1	Tray Support
5	5124818	1	-	Heater Wire	17	5055741	2	2	Upper End Trim Assy.
	5124819	-	1	Heater Wire	18	5237626	3	4	Grid Retainer
6	5055731	1	-	Heater Wire Enclosure	19	5183536	3	3	Screw
	5055732	-	1	Heater Wire Enclosure	20	5196236	1	1	Air Baffle
7	5089985	1	-	Lwr .Grid & Lt. Chan. Assy.	21	5100643	7	7	Nut
	5089986	-	1	Lwr. Grid & Lt. Chan. Assy.	22	5628631	7	7	Lockwasher
8	5055735	1	-	Air Grid Support Bracket	23	5120913	7	7	Bolt
	5055736	-	1	Air Grid Support Bracket	24	5100982	7	7	Washer
					25	5089402	2	2	End Spacer



STRUCTURAL COMPONENTS - (CONT'D)
CANOPY ASSEMBLIES - LDRL
Standard Canopy with T-8 Lighting

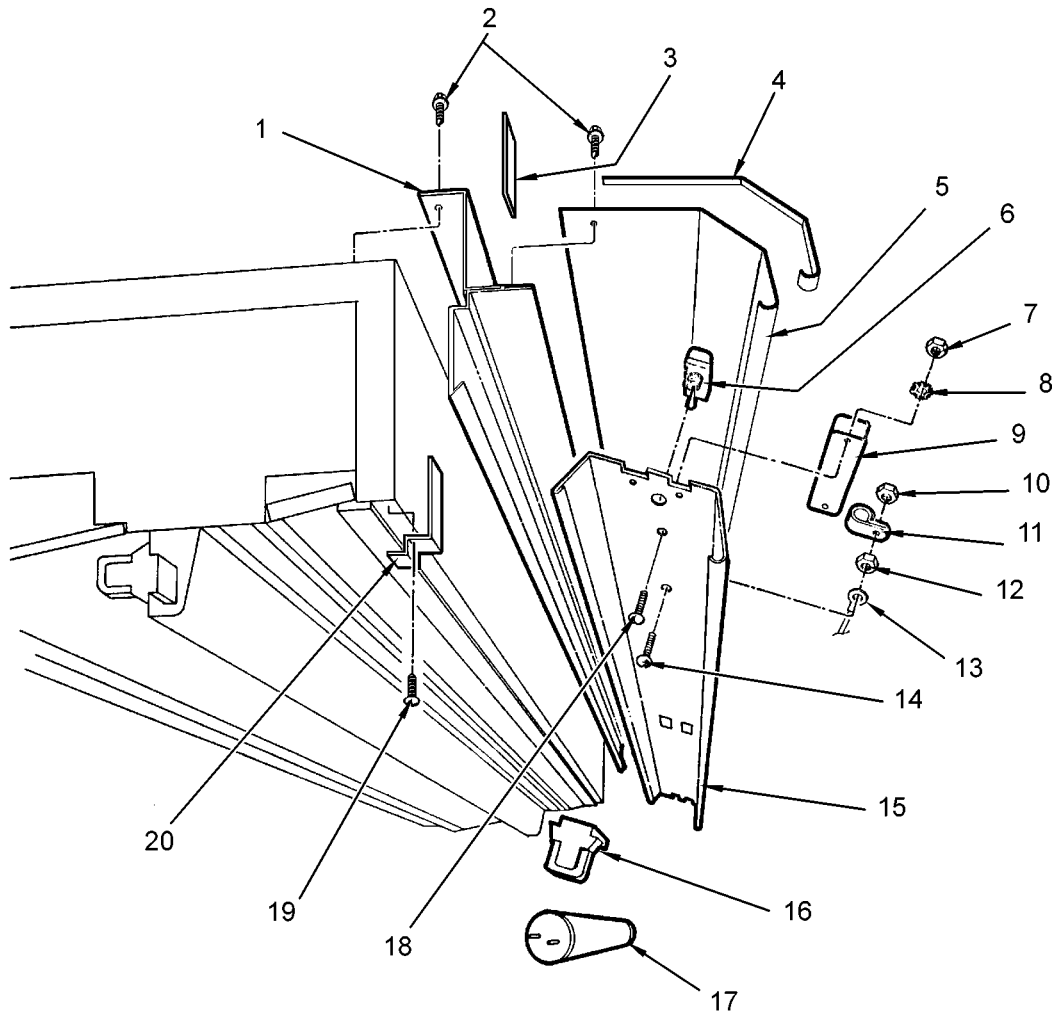


8' and 12' Merchandiser

Item	Part No.	Quantity		Description	Item	Part No.	Quantity		Description
		8'	12'				8'	12'	
1	9026544	1	-	Close-off Panel Assy.	11	5111198	2	4	Nut
	9026546	-	1	Close-off Panel Assy.		12	5195180	2	4
2	5205439	20	20	Screw	13		5966635	1	-
3	5222014	1	1	Light Channel Joint Trim		5991030	-	2	Ballast, 3-Lamp
4	5222015	1	1	Hood Joint Trim	14	5100565	1	1	Light Switch
5	9026548	1	1	Lower Close-off	15	9026017	1	-	Light Channel
6	1309067	9	12	Screw		9026018	-	1	Light Channel
7	5186277	1	-	Top Cover	16	5111197	2	4	Screw
	5186278	-	1	Top Cover		17	5232279	8	12
8	5183536	13	14	Screw	18		-----	4	6
9	9025983	1	1	Hood Backer	19	5183536	10	10	Screw
10	9025223	1	-	Hood					
	9025224	-	1	Hood					



STRUCTURAL COMPONENTS - (CONT'D)
CANOPY ASSEMBLIES - LDRL
Optional Short Canopy with T-8 Lighting

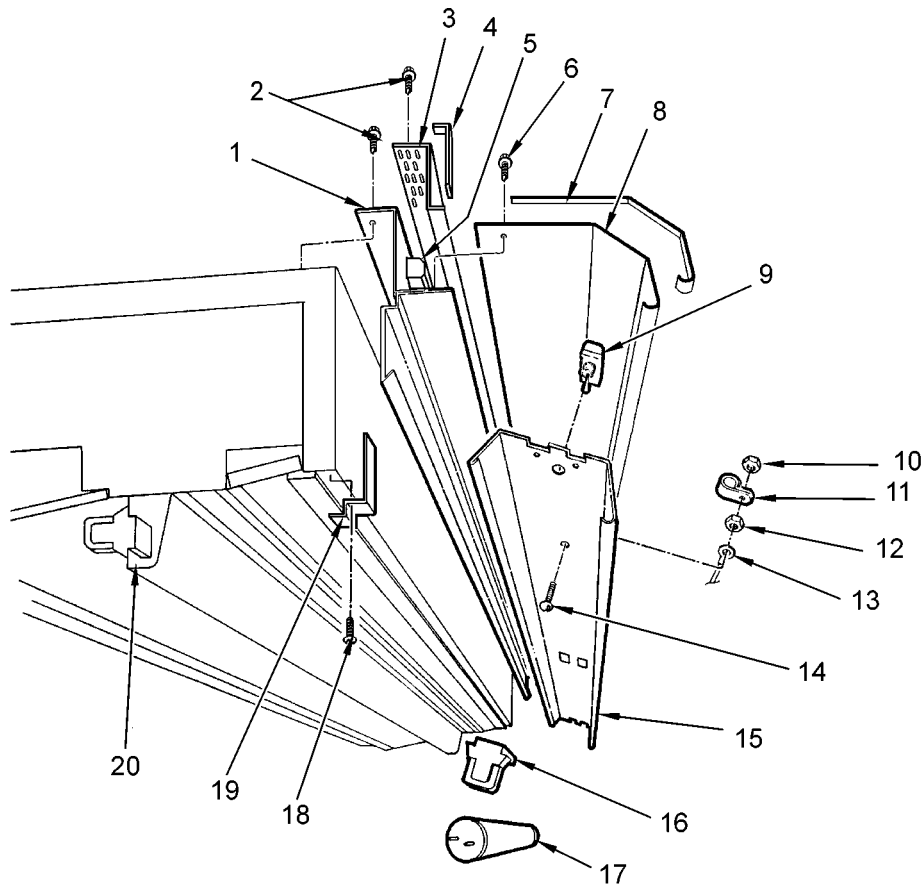


8' and 12' Merchandiser

Item	Part No.	Quantity		Description	Item	Part No.	Quantity		Description
		8'	12'				8'	12'	
*	9028487	1	-	Hood Assy.	9	5966635	1	-	Ballast, T-8 4-Lamp
*	9028488	-	1	Hood Assy.		5991030	-	2	Ballast, T-8 3-Lamp
1	5196224	1	-	Hood Ext. Weld Assy.	10	5100661	1	1	Nut
	5196225	-	1	Hood Ext. Weld Assy.	11	5106713	1	1	Clip
2	5183536	25	31	Screw	12	5100661	1	1	Nut
3	5229600	1	1	Joint Trim	13	5220621	1	1	Harness
4	9025983	1	1	Hood Canopy Backer	14	5100379	1	1	Screw
5	9025223	1	-	Front Hood	15	9026017	1	-	Light Channel
	9025224	-	1	Front Hood		9026018	-	1	Light Channel
*	9026538	1	-	Front Light Channel Assy.	16	5232279	8	12	Lampholder
*	9026539	-	1	Front Light Channel Assy.	17	-----	4	6	Lamp, T-8
6	5100565	1	1	Switch	18	5111197	2	2	Screw
7	5111198	2	2	Nut	19	5205439	4	4	Screw
8	5195180	2	2	Lockwasher	20	5222048	1	1	Joint Trim



STRUCTURAL COMPONENTS - (CONT'D)
CANOPY ASSEMBLIES - LDRL
Optional Short Canopy with 800MA Lighting

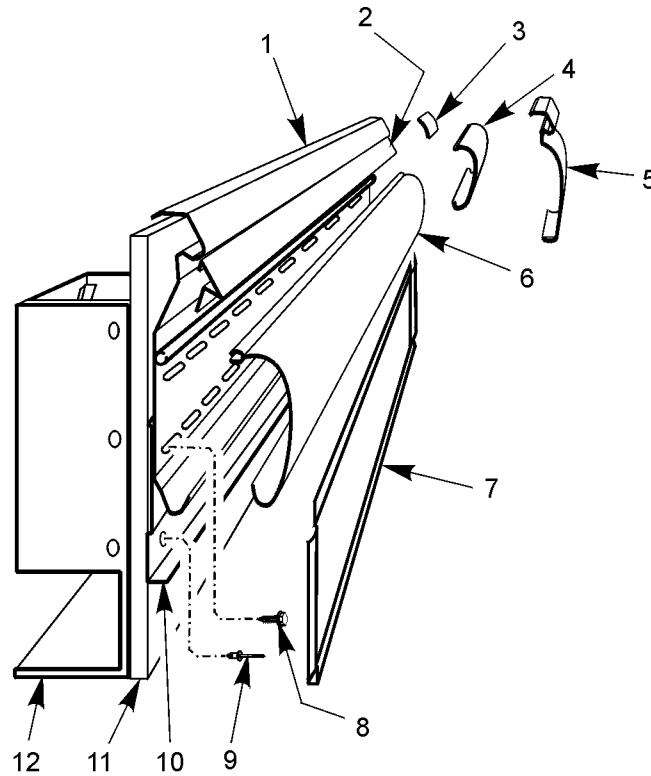


8' and 12' Merchandiser

Item	Part No.	Quantity		Description	Item	Part No.	Quantity		Description
		8'	12'				8'	12'	
*	9026553	1	-	Hood Assy.	14	5100379	1	1	Screw
*	9026554	-	1	Hood Assy.	15	9026019	1	-	Light Channel
1	5233850	1	-	Hood Ext. Weld Assy.		9026020	-	1	Light Channel
	5233851	-	1	Hood Ext. Weld Assy.	16	5614628	2	4	Lampholder, Telescoping
2	5183536	23	29	Screw		5614629	2	4	Lampholder, Stationary
3	5233846	1	-	Top Front Cladding	17	----	2	-	Lamp, 800MA 96"
	5233847	-	1	Top Front Cladding		----	-	4	Lamp, 800MA 72"
4	5234249	1	1	Joint Trim	18	5205439	4	4	Screw
5	5204769	1	2	Ballast, 800MA 2-Lamp	19	5222048	1	1	Joint Trim
	5183536	2	4	Screw	*	5958712	1	-	Top Light Channel Assy.
	5195180	2	4	Lockwasher	*	5958713	-	1	Top Light Channel Assy.
6	5183536	8	12	Screw	20	5958716	1	-	Light Channel Support
7	9025983	1	1	Hood Canopy Backer		5958717	-	1	Light Channel Support
8	9025223	1	-	Front Hood		5958714	1	-	Light Channel
	9025224	-	1	Front Hood		5958715	-	1	Light Channel
*	9026555	1	-	Front Light Channel Assy.		5049140	1	-	Ballast, 800MA 1-Lamp
*	9026556	-	1	Front Light Channel Assy.		5204769	-	1	Ballast, 800MA 2-Lamp
9	5100565	1	1	Switch		5100565	1	1	Switch
10	5100661	1	1	Nut		5614628	1	2	Lampholder, Telescoping
11	5106713	1	1	Clip		5614629	1	2	Lampholder, Stationary
12	5100661	1	1	Nut		----	1	-	Lamp, 800MA 96"
13	5220621	1	1	Harness		----	-	2	Lamp, 800MA 72"



STRUCTURAL COMPONENTS - (CONT'D)
FRONT PANEL ASSEMBLIES AND CLADDING - LDRL



8' and 12' Merchandiser

Item	Part No.	Quantity		Description	Item	Part No.	Quantity		Description
		8'	12'				8'	12'	
1	+	1	1	Bumper Retainer	10	9027292	1	-	Harness Support Assy.
2	9023798	1	-	Color Band, Ptd.		9027593	-	1	Harness Support Assy.
	9023800	-	1	Color Band, Ptd.		5237930	1	-	Fan Harness
3	9040223	1	1	Color Band Backer, Ptd.		5237931	-	1	Fan Harness
4	+	1	1	Bumper Backer		9027589	4	6	Holder Plug
5	+	1	1	Bumper End Trim		9027590	1	-	Harness Support
6	+	1	1	Bumper		9027591	-	1	Harness Support
7	9029392	1	-	Lower Front Cladding, MB SS		5104702	8	12	Rivet
	9029393	-	1	Lower Front Cladding, MB SS	11	9027612	1	-	Front Frame Assy.
8	9025833	12	18	Screw		9027613	-	1	Front Frame Assy.
9	5104702	8	6	Rivet	12	5629805	2	3	LH End Close-off Assy.
						5629806	2	3	RH End Close-off Assy.
						5105037	16	24	Rivet

+ See pages S7 and S8 for parts breakdown per color.



STRUCTURAL COMPONENTS - (CONT'D)

LDRL - 8'

Bumper Retainer [Item 1]
W/O Partition
(96.062"):

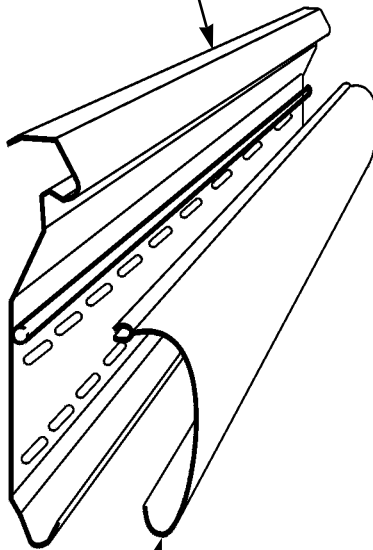
Part No.	Color
9025421	Pearly Gates
9025491	White
9025504	Bone White
9025517	Misty Gray
9025530	Pearl
9025543	Oatmeal
9025557	Soft Sand
9025570	Chromium
9025583	Cool Gray
9025596	Oyster
9025609	Black
9028935	Steel Gray
9031792	Chocolate
9031819	Mocha
9031873	Stone

W/ Partition
(97.062"):

Part No.
9301760
9026949
9026950
9026951
9026952
9026953
9026954
9026955
9026956
9026957
9026958
9028937
9031794
9031821
9031875

Bumper Backer [Item 4]

Part No.	Color
9025023	White
9025028	Bone White
9025035	Misty Gray
9025038	Pearl
9025041	Oatmeal
9025079	Pearly Gates
9025253	Soft Sand
9025258	Chromium
9025265	Cool Gray
9025268	Oyster
9025271	Black
9028883	Steel Gray
9031884	Chocolate
9031885	Mocha
9031886	Stone



Bumper End Trim [Item 5]

Part No.	Color
9027220	White
9027221	Bone White
9027222	Misty Gray
9027223	Pearl
9027224	Oatmeal
9027225	Soft Sand
9027226	Chromium
9027227	Cool Gray
9027228	Oyster
9027229	Black
9028882	Steel Gray
9029093	Pearly Gates
9031333	Chocolate
9031334	Mocha
9031335	Stone
9023195	RH Pusher Brkt
9028082	LH Pusher Brkt
5053985	Screw

Bumper [Item 6]
W/O Partition
(96.062"):

Part No.	Color
9025036	White
9025067	Pearly Gates
9025266	Bone White
9025287	Misty Gray
9025308	Pearl
9025329	Oatmeal
9025350	Soft Sand
9025371	Chromium
9025392	Cool Gray
9025413	Oyster
9025434	Black
9028905	Steel Gray
9031687	Chocolate
9031724	Mocha
9031761	Stone

W/ Partition
(97.062"):

Part No.
9027179
9301745
9027180
9027181
9027182
9027183
9027184
9027185
9027186
9027187
9027188
9028907
9031689
9031726
9031763



STRUCTURAL COMPONENTS - (CONT'D)

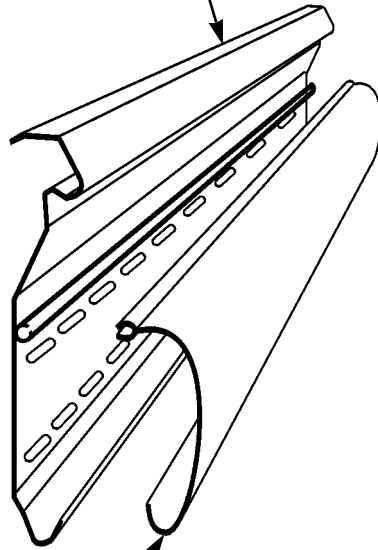
LDRL - 12'

Bumper Retainer [Item 1] W/O Partition (144.062"):

Part No.	Color
9025426	Pearly Gates
9025493	White
9025506	Bone White
9025519	Misty Gray
9025532	Pearl
9025545	Oatmeal
9025559	Soft Sand
9025572	Chromium
9025585	Cool Gray
9025598	Oyster
9025611	Black
9028940	Steel Gray
9031797	Chocolate
9031824	Mocha
9031878	Stone

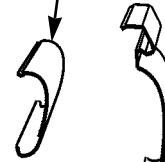
W/ Partition (145.062"):

Part No.
9301761
9026969
9026970
9026971
9026972
9026973
9026974
9026975
9026976
9026977
9026978
9028942
9031799
9031826
9031880



Bumper Backer [Item 4]

Part No.	Color
9025023	White
9025028	Bone White
9025035	Misty Gray
9025038	Pearl
9025041	Oatmeal
9025079	Pearly Gates
9025253	Soft Sand
9025258	Chromium
9025265	Cool Gray
9025268	Oyster
9025271	Black
9028883	Steel Gray
9031884	Chocolate
9031885	Mocha
9031886	Stone



Bumper [Item 6] W/O Partition (144.062"):

Part No.	Color
9025039	White
9025068	Pearly Gates
9025269	Bone White
9025290	Misty Gray
9025311	Pearl
9025332	Oatmeal
9025353	Soft Sand
9025374	Chromium
9025395	Cool Gray
9025416	Oyster
9025437	Black
9028912	Steel Gray
9031695	Chocolate
9031732	Mocha
9031769	Stone

W/ Partition (145.062"):

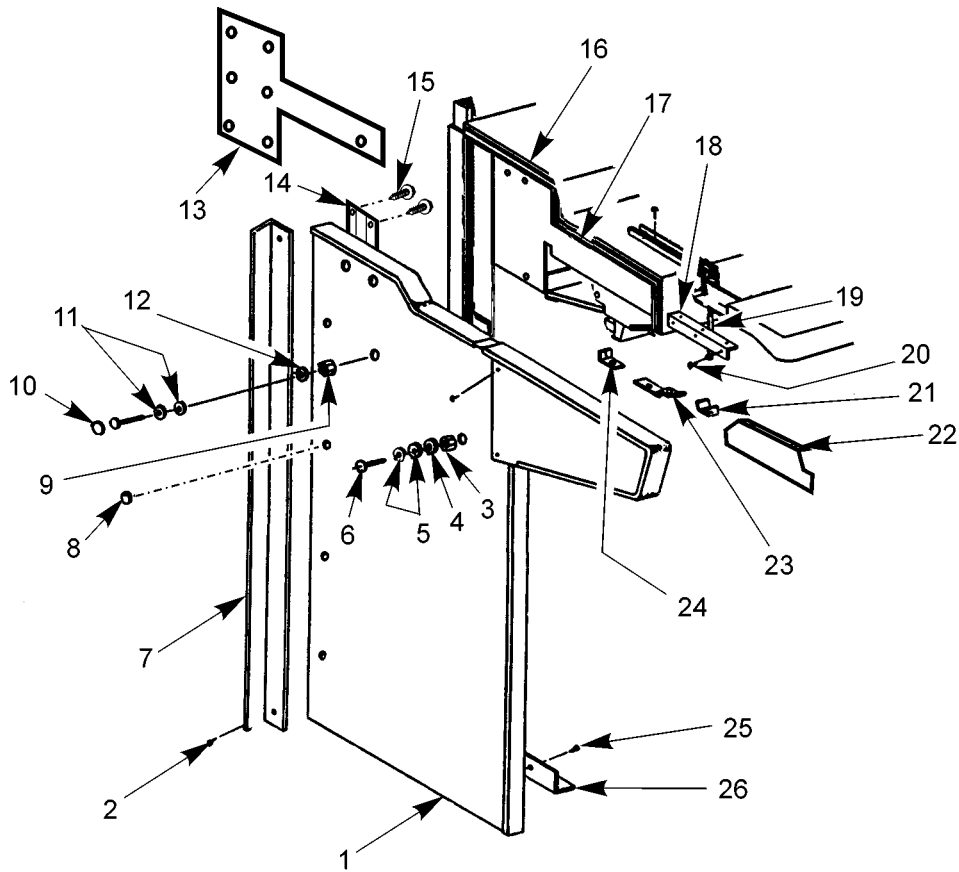
Part No.
9027199
9301747
9027200
9027201
9027202
9027203
9027204
9027205
9027206
9027207
9027208
9028914
9031697
9031734
9031771

Bumper End Trim [Item 5]

Part No.	Color
9027220	White
9027221	Bone White
9027222	Misty Gray
9027223	Pearl
9027224	Oatmeal
9027225	Soft Sand
9027226	Chromium
9027227	Cool Gray
9027228	Oyster
9027229	Black
9028882	Steel Gray
9029093	Pearly Gates
9031333	Chocolate
9031334	Mocha
9031335	Stone
9023195	RH Pusher Brkt
9028082	LH Pusher Brkt
5053985	Screw



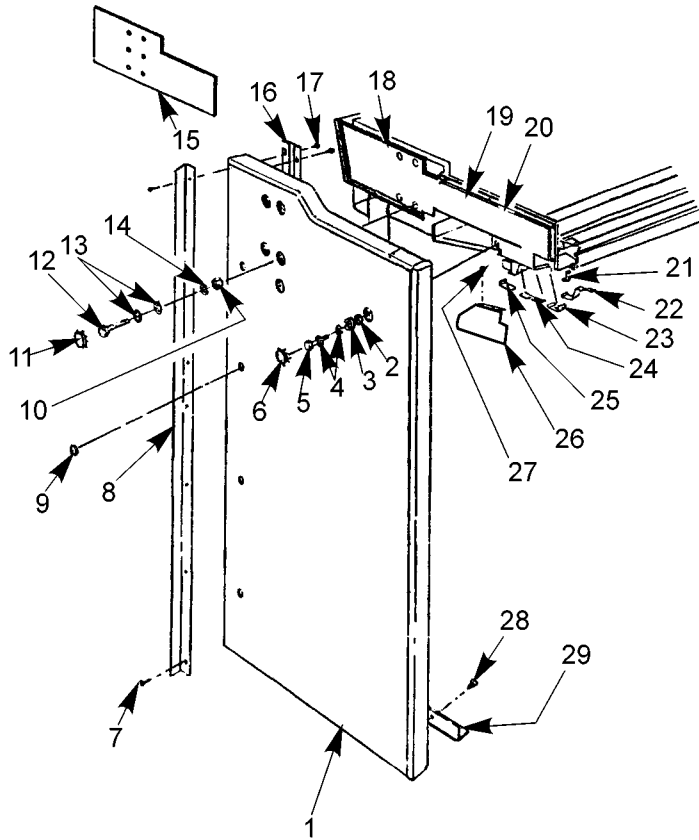
STRUCTURAL COMPONENTS - (CONT'D)
PATCH ENDS, PARTITIONS AND DIVIDERS - LDRL
Solid Patch Ends, Standard Hood Boxed



Item	Part No.	Qty.	Description	Item	Part No.	Qty.	Description
*	9022298	1	LH Contoured Box End Assy., Ptd. w/MB SS Liner	9	5100643	4	Nut, 1/2"-13
*	9022297	1	RH Contoured Box End Assy., Ptd. w/MB SS Liner	10	5100913	6	Plug Button, 1 3/8"
1	9030198	1	LH Contoured Box End Bench Assy.	11	5100982	8	Washer, 1/2"
	9030197	1	RH Contoured Box End Bench Assy.	12	5628631	4	Lockwasher, 1/2"
	9030815	1	LH Cont. Box End Panel, Ptd.	13	5089402	1	End Spacer
	9030814	1	RH Cont. Box End Panel, Ptd.	14	5183473	1	Inside Cooler & End Joint Trim
	9030813	1	LH Cont. Box Liner, MB SS	15	5205439	18	Screw
	9030812	1	RH Cont. Box Liner, MB SS	16	5107190	A/R	Sponge Rubber, 1/2"
2	5205439	18	Screw	17	5145225	A/R	Ethofoam Gasket
3	5100634	1	Nut, 3/8"-16	18	5617747	1	Upper Panel End Trim
4	5101006	1	Lockwasher, 3/8"	19	5210999	1	Front Cladding End Trim
5	5100979	2	Washer, 3/8"	20	5205439	6	Screw
6	5149341	1	Machine Screw, 3/8"-16	21	5186734	1	Htr. Wire Enclosure End Trim
7	5183475	1	Outside Cooler & End Joint Trim	22	9030254	1	LH Hood End Close-off
8	5100918	4	Plug Button, 5/8"		9030253	1	RH Hood End Close-off
				23	5186732	1	Front Grid End Trim
				24	5089303	1	Rear Grid End Trim
				25	5111030	2	Screw
				26	5613835	1	Floor Angle



STRUCTURAL COMPONENTS - (CONT'D)
 PATCH ENDS, PARTITIONS AND DIVIDERS - LDRL
 Solid Patch Ends, Short Hood Boxed

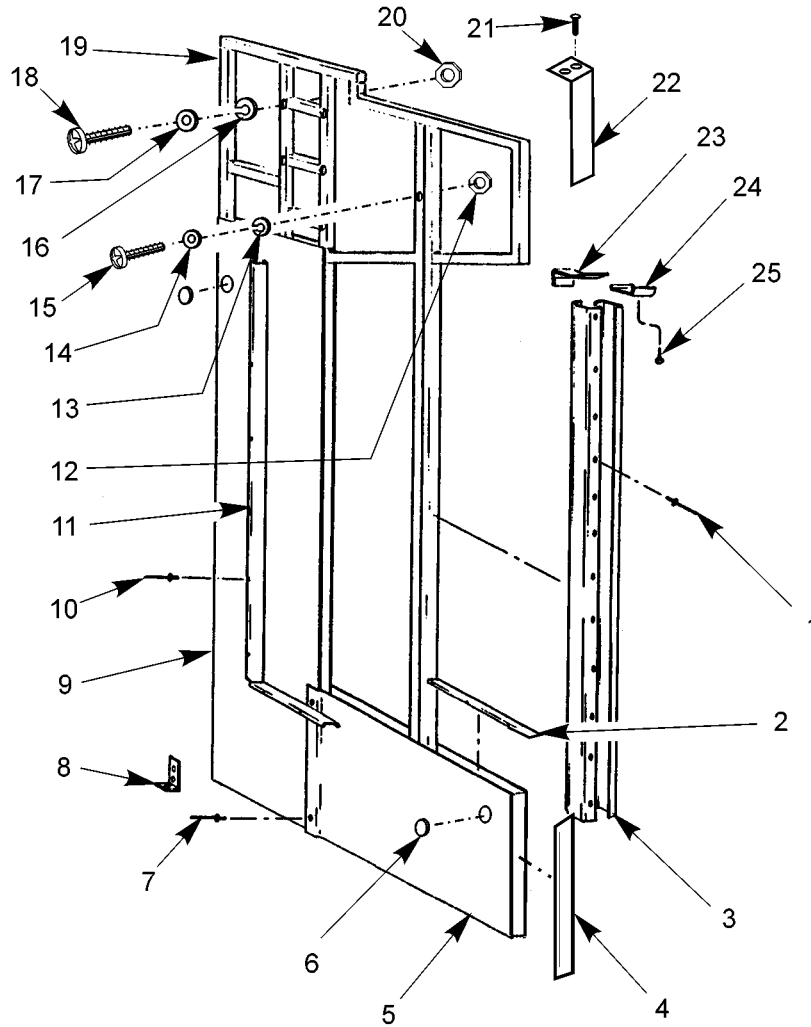


Item	Part No.	Qty.	Description
	9028672	1	RH Box End Bench Assy., BRT SS w/BRT SS Liner
	9028673	1	LH Box End Bench Assy., BRT SS w/BRT SS Liner
	9030755	1	RH Box End Bench Assy., BRT SS w/MB SS Liner
	9030756	1	LH Box End Bench Assy., BRT SS w/MB SS Liner
	9030814	1	RH End Panel, Ptd.
	9030815	1	LH End Panel, Ptd.
	9030816	1	RH End Panel, BRT SS
	9030817	1	LH End Panel, BRT SS
	9030812	1	RH End Liner, MB SS
	9030813	1	LH End Liner, MB SS
	9030810	1	RH End Liner, BRT SS
	9030811	1	LH End Liner, BRT SS
2	5100634	1	Nut, 3/8"-16
3	5101006	1	Lockwasher, 3.8"
4	5100979	2	Washer, 3/8"
5	5149341	1	Machine Screw, 3/8"-16
6	5105054	1	Plug Button. 1"
7	5205439	18	Screw
8	5183475	1	OUT Cooler & End Joint Trim
9	5100918	4	Plug Button
10	5100643	4	Nut, 1/2"-13
11	5100913	5	Plug Button, 1 3/8"
12	5221251	4	Machine Screw, 1/2"-13
13	5100982	8	Washer, 1/2"
14	5628631	4	Lockwasher, 1/2"
15	5089402	1	End Spacer
16	5183474	1	INS Cooler & End Joint Trim
17	5205439	18	Screw
18	5107190	A/R	Sponge Rubber, 1/2"
19	5145225	A/R	Ethofoam Gasket
20	5618908	6	Foam Spline Fastener
21	5210994	1	Front Cladding Joint Trim
22	5232142	1	Light Channel Joint Trim
23	5186734	1	Htr. Wire Enclosure End Trim
24	5186732	1	Front Grid End Trim
25	5089303	1	Rear Grid End Trim
26	9030227	1	LH Canopy Close-off, Ptd.
	9035381	1	LH Canopy Close-off, BRT SS
	9035383	1	LH Canopy Close-off, MB SS
	9030226	1	RH Canopy Close-off, Ptd.
	9035380	1	RH Canopy Close-off, BRT SS
	9035382	1	RH Canopy Close-off, MB SS
27	5120943	2	Screw
28	5111030	2	Screw
29	5613835	1	Floor Angle

Item	Part No.	Qty.	Description
*	9022291	1	RH Box End Assy., Ptd. w/MB SS Liner (Short Hd.)
*	9022292	1	LH Box End Assy., Ptd. w/MB SS Liner (Short Hd.)
*	9022293	1	RH Box End Assy., Ptd. w/BRT SS Liner (Short Hd.)
*	9022294	1	LH Box End Assy., Ptd. w/BRT SS Liner (Short Hd.)
*	9022295	1	RH Box End Assy., BRT SS w/BRT SS Liner (Short Hd.)
*	9022296	1	LH Box End Assy., BRT SS w/BRT SS Liner (Short Hd.)
*	9030753	1	RH Box End Assy., BRT SS w/MB SS Liner (Short Hd.)
*	9030754	1	LH Box End Assy., BRT SS w/MB SS Liner (Short Hd.)
1	9030197	1	RH Box End Bench Assy., Ptd. w/MB SS Liner
	9030198	1	LH Box End Bench Assy., Ptd. w/MB SS Liner
	9030229	1	RH Box End Bench Assy., Ptd. w/BRT SS Liner
	9030230	1	LH Box End Bench Assy., Ptd. w/BRT SS Liner



STRUCTURAL COMPONENTS - (CONT'D)
 PATCH ENDS, PARTITIONS AND DIVIDERS - LDRL
 Partition, 13" Front



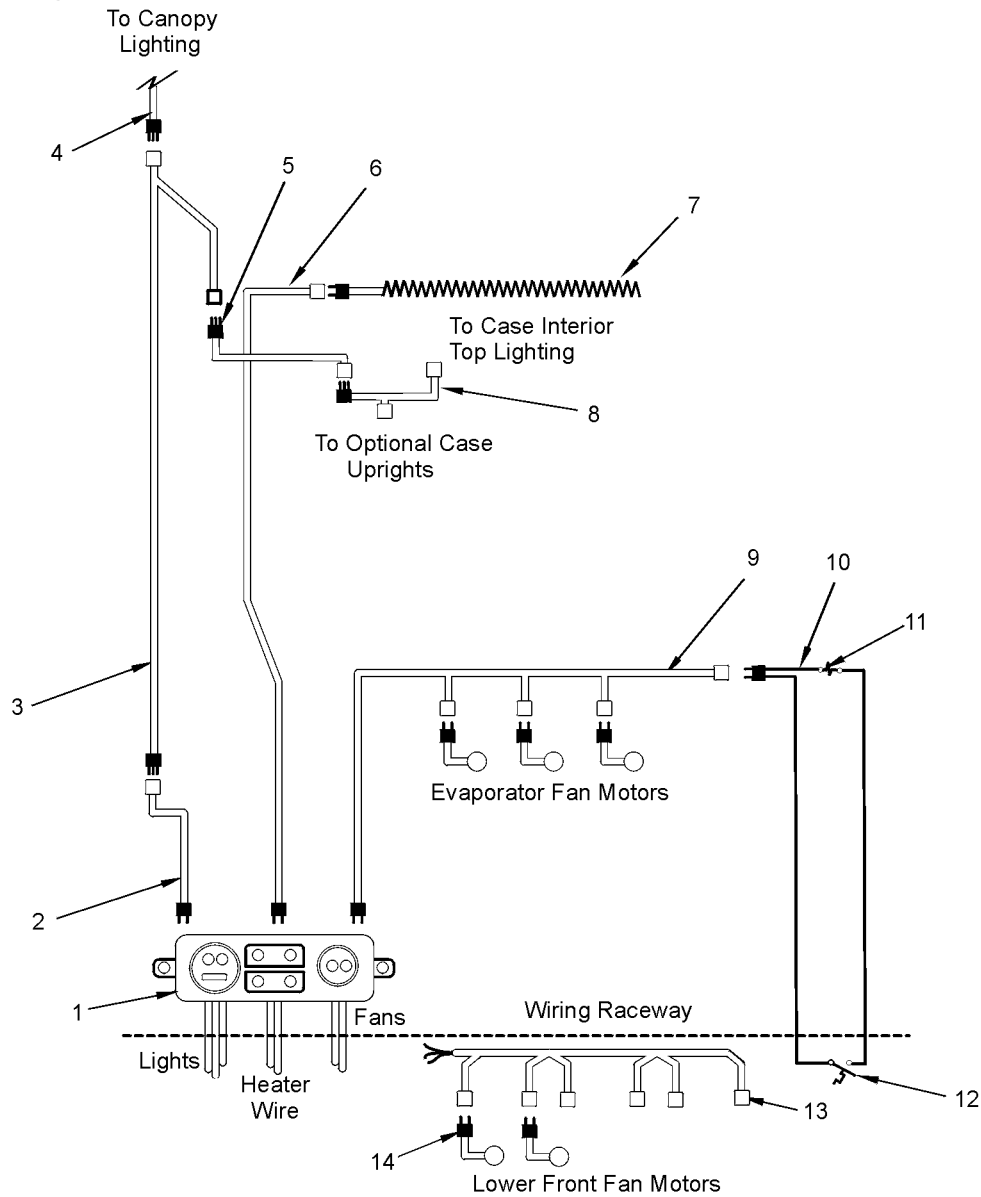
Item	Part No.	Qty.	Description	Item	Part No.	Qty.	Description
*	9030683	1	Partition Assy., 13" Front	11	9030689	1	Vertical Trim Rail
1	5179715	12	Rivet	12	5100634	1	Nut, 3/8"-16
2	9030691	1	Front Trim Rail	13	5101006	1	Lockwasher, 3/8"
	5104702	4	Rivet (2 per side of rail)	14	5100979	1	Washer, 3/8"
3	9030688	2	Trim Post	15	5100748	1	Machine Screw, 3/8"-16
4	9030690	1	Lower Trim Rail	16	5628631	4	Lockwasher, 1/2"
	5104702	4	Rivet (2 per side of rail)	17	5100982	4	Washer, 1/2"
5	9030687	1	LH Lower Panel	18	5625256	4	Machine Bolt, 1/2"-13
	9030686	1	RH Lower Panel	19	9030685	1	Frame Assy.
6	5100913	4	Plug Button, 1 3/8"	20	5100643	4	Nut, 1/2"-13
7	5104957	3	Rivet	21	5183536	2	Screw
8	5940119	1	Partition Hold Down Bracket	22	9031345	1	Top Front Joint Trim
	1309067	2	Screw	23	5940120	1	Front Grid Joint Trim
9	5208337	1	LH Vertical Panel	24	5940121	1	Htr. Wire Enclosure Joint Trim
	5208336	1	RH Vertical Panel	25	5058099	2	Screw
10	5104957	16	Rivet (8 per side of rail)				



ELECTRICAL SYSTEM COMPONENTS

WIRING HARNESSSES - LDRL

Wiring and Components



8' and 12' Merchandiser

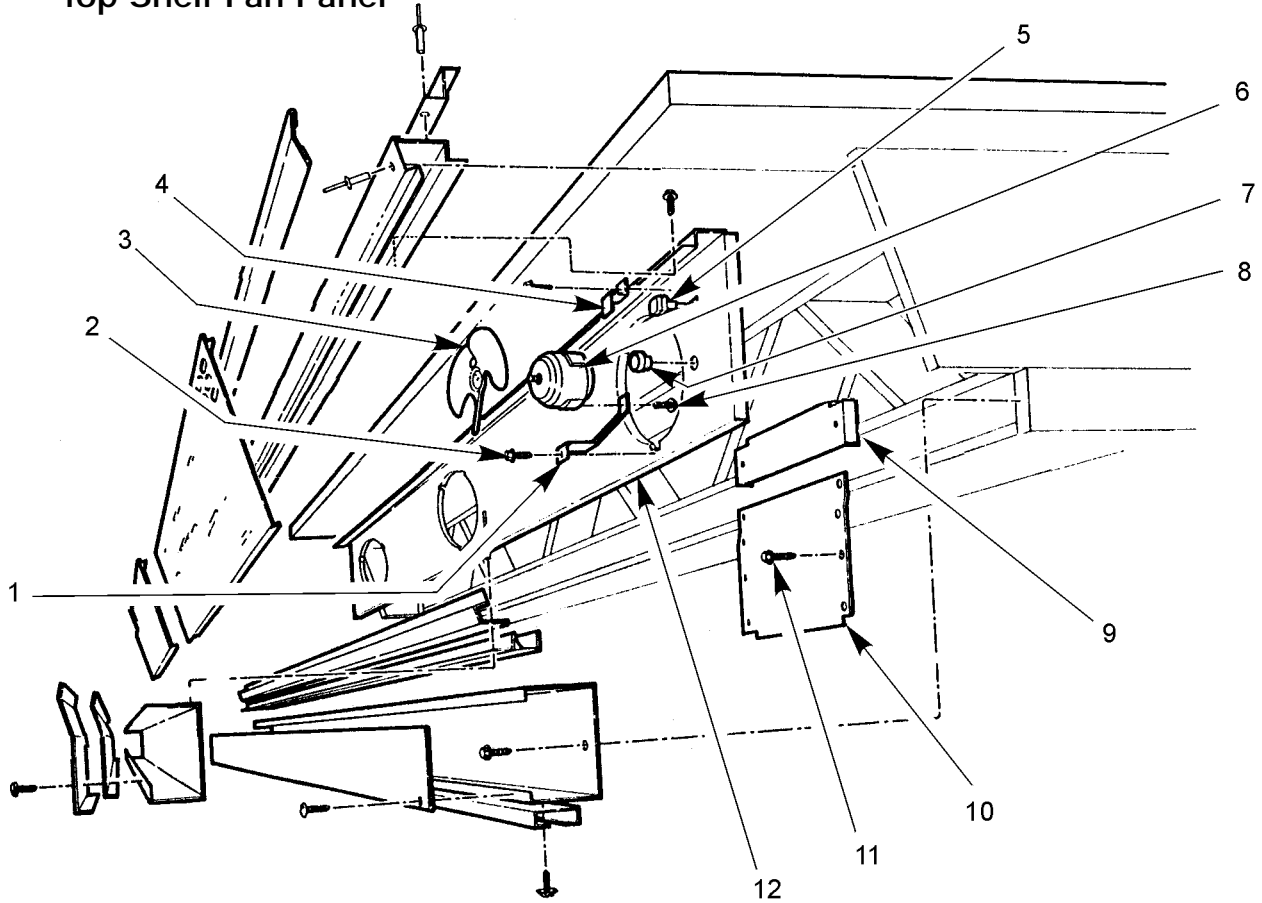
Item	Part No.	Quantity		Description	Item	Part No.	Quantity		Description
		8'	12'				8'	12'	
1	5199320	1	1	Input Harness, 115V	9	5199415	1	-	Evaporator Fan Harness
2	5220484	1	1	Light Harness		5199437	-	1	Evaporator Fan Harness
3	5220500	1	1	Light Harness	*	5948239	1	1	Opt. Thermostat Wired to Solenoid Assy.
4	5220621	1	1	Light Harness	10	5210359	1	1	Opt. Solenoid Harness
5	5220493	1	1	Light Harness		5210353	1	1	Opt. Harness Control Lead
6	5123837	1	1	Anti-Sweat Harness	11	5084991	1	1	Opt. Solenoid Valve
7	5124818	1	-	Heater Wire	12	5193888	1	1	Opt. Thermostat
	5124819	-	1	Heater Wire		5124209	1	1	Opt. Harness
8	5220485	1	-	Light Harness	13	5237931	1	1	Front Fan Support Harness
	5220486	-	1	Light Harness	14	5237932	2	3	Front Fan Motor Harness



ELECTRICAL SYSTEM COMPONENTS - (CONT'D)

FAN SYSTEMS - LDRL

Top Shelf Fan Panel

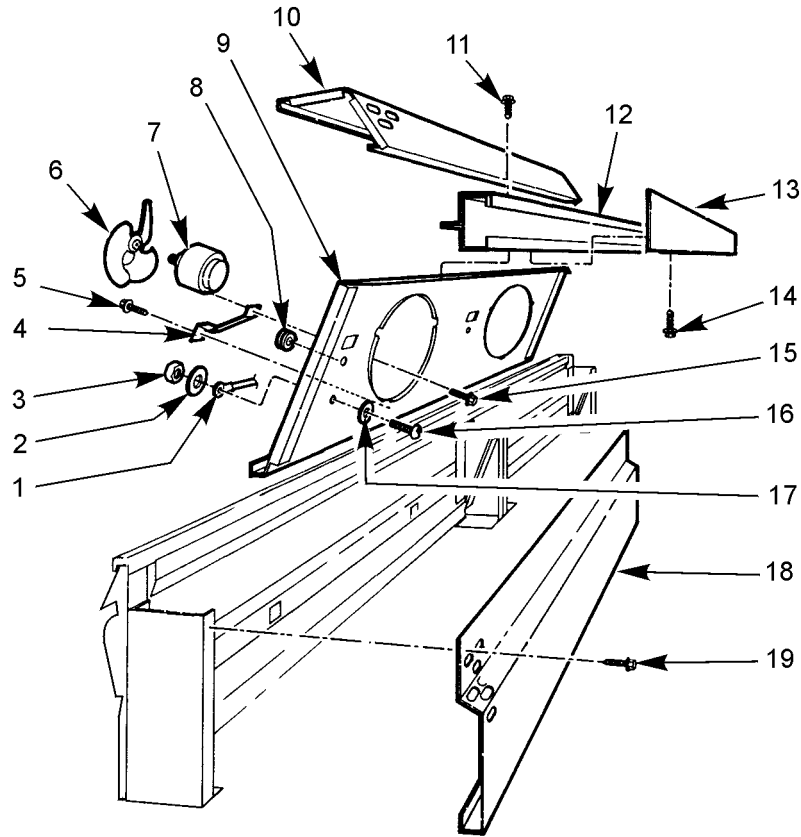


8' and 12' Merchandiser

Item	Part No.	Quantity		Description	Item	Part No.	Quantity		Description
		8'	12'				8'	12'	
*	5238291	1	-	Fan Panel Assy.	6	5243498	3	4	Fan Motor, 9W
*	5238292	-	1	Fan Panel Assy.		9025000	3	4	Opt. ECM Fan Motor, 12W
*	5083688	3	4	Fan Motor & Bracket Assy.	7	5123674	3	4	Strain Relief
1	5205112	9	12	Bracket	8	5183536	9	12	Screw (1 per bracket)
2	5224012	9	12	Screw (1 per bracket)	9	5089977	1	1	Upper Fan Panel Close-off
3	5104858	3	4	Fan Blade, 8.75" 31° 5B	10	5238277	1	1	LH LWR Fan Panel Close-off
	5187551	3	4	Opt. ECM Fan Blade, 8.75" 30° 5B		5196243	1	1	RH LWR Fan Panel Close-off
4	5237755	3	4	Plug Cover Bracket	11	5183536	20	20	Screw (2 per upper & 8 per lower close-off)
	5183536	3	4	Screw (1 per bracket)	12	5238270	1	-	Fan Panel
5	5199415	1	-	Fan Harness		5238271	-	1	Fan Panel
	5199437	-	1	Fan Harness					



ELECTRICAL SYSTEM COMPONENTS - (CONT'D)
 FAN SYSTEMS - LDRL
 Bottom Front Fan Panel

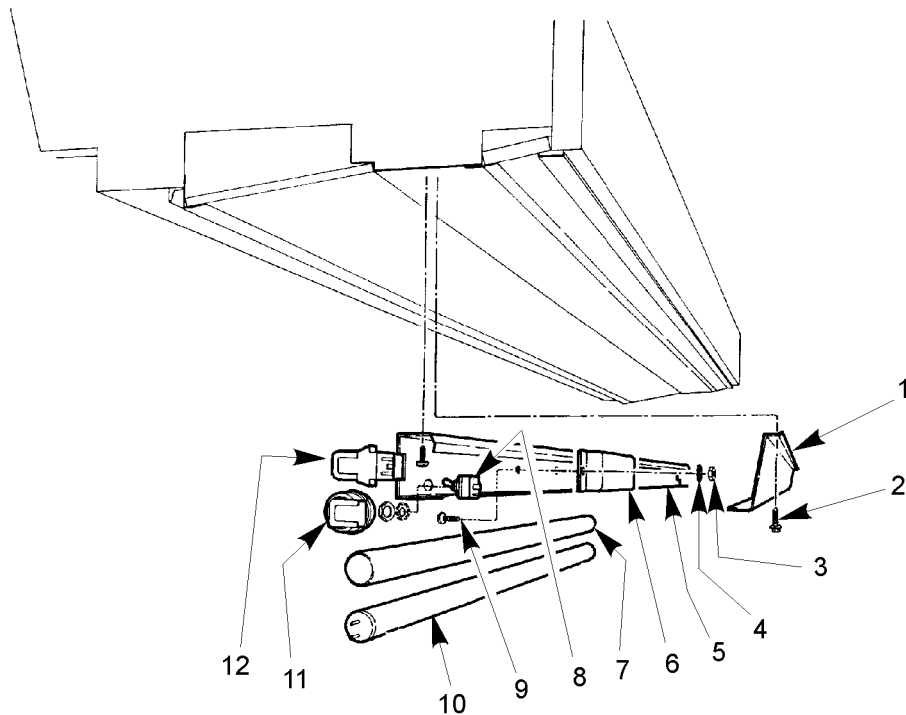


8' and 12' Merchandiser

Item	Part No.	Quantity		Description	Item	Part No.	Quantity		Description
		8'	12'				8'	12'	
1	5237932	2	3	Fan Harness	9	5182849	2	3	Fan Panel
	5237700	2	3	Harness & Plug Cover	10	5244407	2	3	Front Duct
	5183536	4	6	Screw (2 per cover)	11	5183536	8	12	Screw (4 per duct)
2	5103996	2	3	Lockwasher (1 per harness)	12	5237088	1	-	Raceway Assy.
3	5111198	2	3	Nut (1 per harness)		5237089	-	1	Raceway Assy.
*	5237703	2	3	Fan Motor Assy.	13	5237090	1	-	Raceway Cover
*	9029003	2	3	Opt. ES Fan Motor Assy.		5237091	-	1	Raceway Cover
4	5120098	6	9	Fan Motor Bracket (3 per motor)	14	5183536	4	4	Screw
5	5120943	6	9	Screw (1 per bracket)	15	5224128	6	9	Screw (1 per bracket)
6	5104738	2	3	Fan Blade, 7.75" 32°	16	5111197	2	3	Screw (1 per harness)
7	5125532	2	3	Fan Motor, 5W	17	5103996	2	3	Lockwasher (1 per harness)
	5215879	2	3	Opt. ES Fan Motor, 12W	18	5237718	2	3	Rear Fan Guard
8	5123674	2	3	Strain Relief (1 per harness)	19	5183536	8	12	Screw (4 per guard)



ELECTRICAL SYSTEM COMPONENTS - (CONT'D)
TOP LIGHT ASSEMBLIES - LDRL

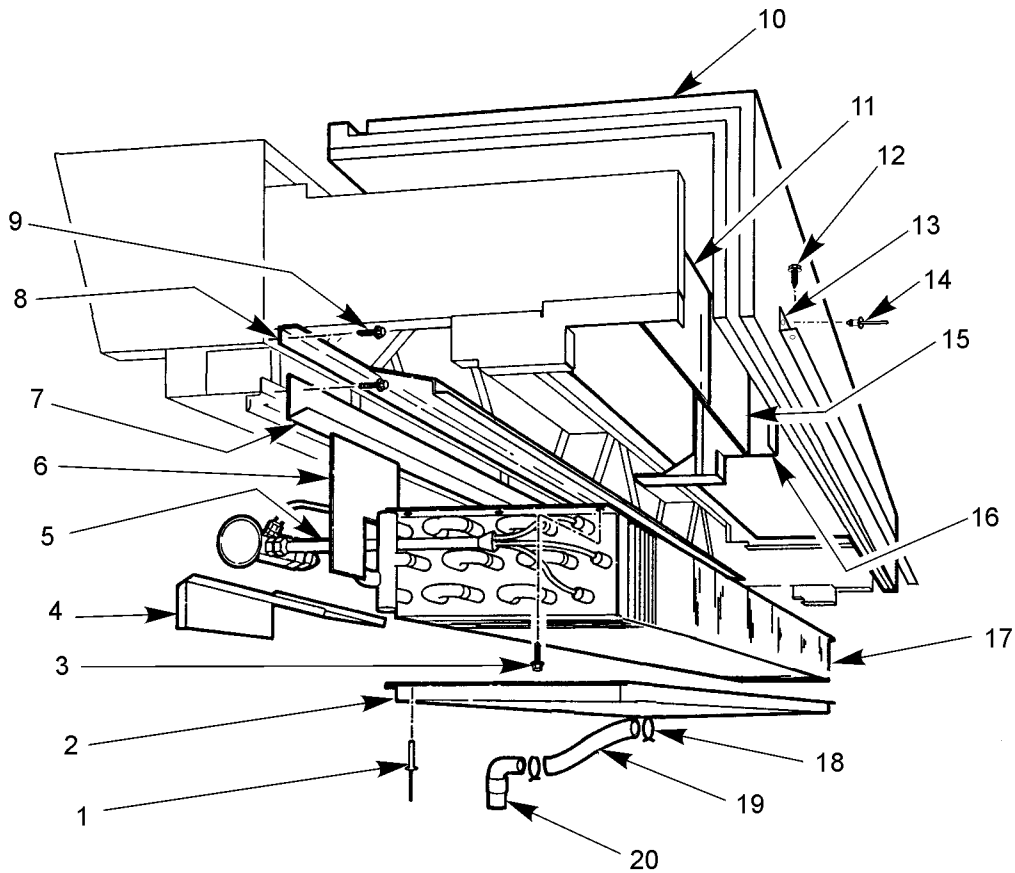


8' and 12' Merchandiser

Item	Part No.	Quantity		Description	Item	Part No.	Quantity		Description
		8'	12'				8'	12'	
1	5089960	1	-	Light Channel Support	6	5991029	1	-	Ballast, 2-Lamp
	5089964	-	1	Light Channel Support		5991030	-	1	Ballast, 3-Lamp
2	5619204	6	8	Screw	7	5232535	2	-	Opt. HO Clear Lampshield, 96" w/o Caps
*	5991137	1	-	Top Light Channel Assy.		5998230	2	3	Opt. T-8 Amber Lampshield, 48" w/Caps
*	5991138	-	1	Top Light Channel Assy.					
	5220493	1	1	Harness	8	5100565	1	1	Switch
	5211734	2	2	Insulated Flag Connector	9	5111197	3	3	Screw
3	5111198	3	3	Nut	10	----	2	3	Lamp, T-8
4	5195180	5	5	Lockwasher	11	5235709	4	6	Lampholder Cap (for P/N 5232535)
	5100973	2	2	Washer					
5	5190170	1	-	Light Channel	12	5232279	4	6	Lampholder
	5190171	-	1	Light Channel					



REFRIGERATION SYSTEM COMPONENTS COIL ASSEMBLIES - LDRL

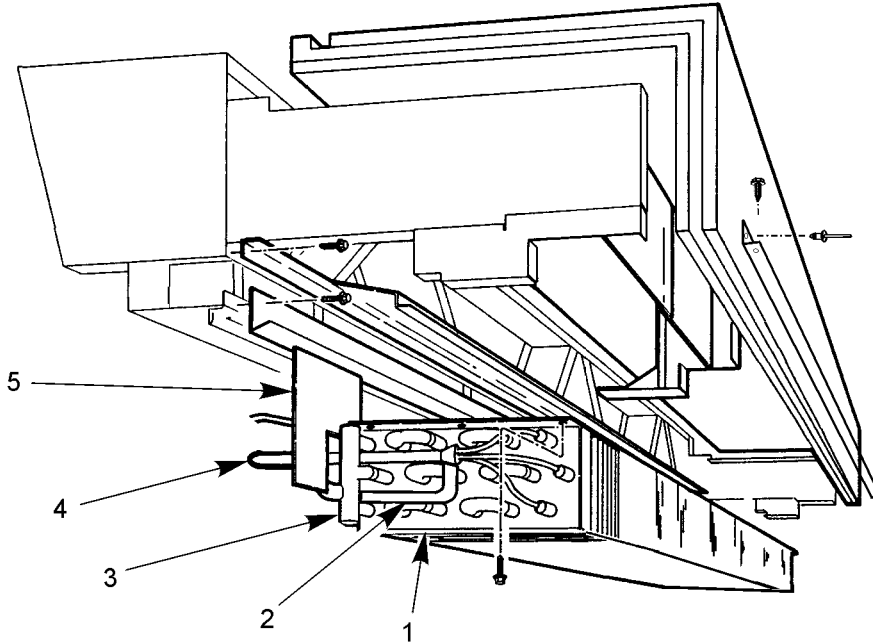


8' and 12' Merchandiser

Item	Part No.	Quantity		Description	Item	Part No.	Quantity		Description
		8'	12'				8'	12'	
1	5105037	20	26	Rivet	10	5180723	1	-	Top Shelf Foam Assy.
2	5186750	1	-	Coil Drain Pan Assy.		5180724	-	1	Top Shelf Foam Assy.
	5186751	-	1	Coil Drain Pan Assy.	11	5055733	8	12	Front Air Deflector
3	5183536	6	9	Screw	12	5183536	6	8	Screw
4	5187838	1	1	Drain Shield	13	5089979	1	-	Fan Panel Close-off
5	5187842	1	-	Heat Exchanger & External Equalizer Assy.		5089980	-	1	Fan Panel Close-off
	5187843	-	1	Heat Exchanger & External Equalizer Assy.					Holddown
6	5187837	1	1	LH Coil End Close-off	14	5105037	6	8	Screw
	5180694	1	1	RH Coil End Close-off	15	5183595	3	5	Gusset Extension
7	5089968	1	-	Tray Support	16	5183596	3	5	Front Support Gusset
	5089969	-	1	Tray Support	17	5187840	1	-	Coil & Fitting Assy.
	5183536	6	8	Screw		5187841	-	1	Coil & Fitting Assy.
8	5055093	1	-	Coil & Drain Pan Close-off	18	5619774	2	2	Hose Clamp
	5055094	-	1	Coil & Drain Pan Close-off	19	5089951	1	1	Hose
9	5183536	6	8	Screw	20	5239336	1	1	Drain Tube Assy.



REFRIGERATION SYSTEM COMPONENTS - (CONT'D)
 OPTIONAL HOT GAS DEFROST SYSTEM - LDRL

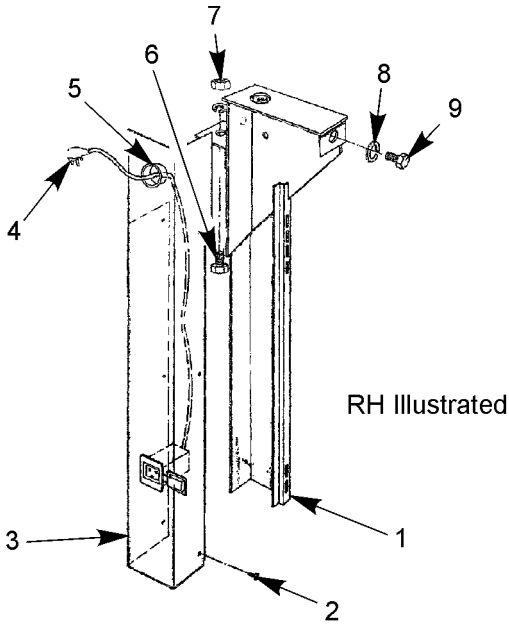


8' and 12' Merchandiser

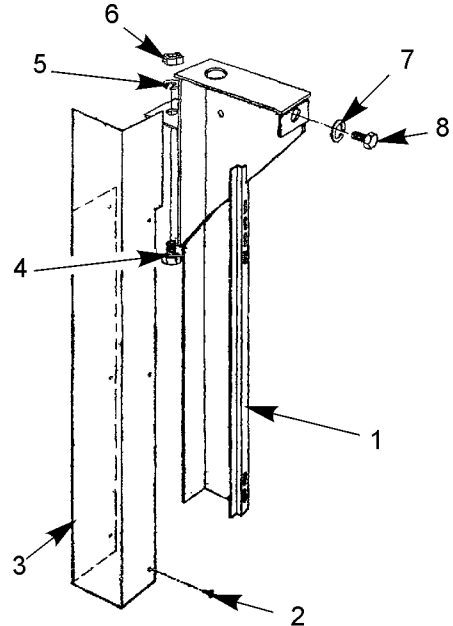
Item	Part No.	Quantity		Description	Item	Part No.	Quantity		Description
		8'	12'				8'	12'	
1	5233080	1	-	Gas Coil & Fitting Assy.	5233076	1	-	Gas Heat Exchanger Assy.	
	5233081	-	1	Gas Coil & Fitting Assy.		5233077	-	1	Gas Heat Exchanger Assy.
2	9601181	1	1	Distributor Tube (to check valve)	4	5624902	1	1	Schrader Valve
	5200228	1	1	Check Valve, 1/2"		5235417	1	1	Gas Distributor & Lines Assy.
3	5617193	1	1	Manifold Assy.	5233709	1	1	Liquid Line Assy.	
	5233078	1	-	External Equalizer & Heat Exchanger Assy.	5	5194877	1	1	LH Gas End Coil Close-off
	5233079	-	1	External Equalizer & Heat Exchanger Assy.	*	5224112	1	1	Gas Def. Fan Control Assy.
						9023503	1	1	Klixon Thermostat, 50/40
						5224113	1	1	Fan Control Jumper
					*	9040500	1	1	Gas Term. Klixon Assy.
						9023508	1	1	Klixon Thermostat, 55/40



OPTIONAL CASE ACCESSORIES HANGING UPRIGHTS - LDRL



17" Hanging Uprights



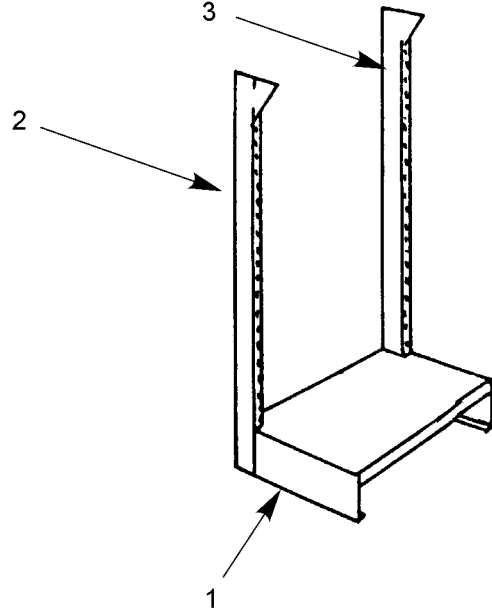
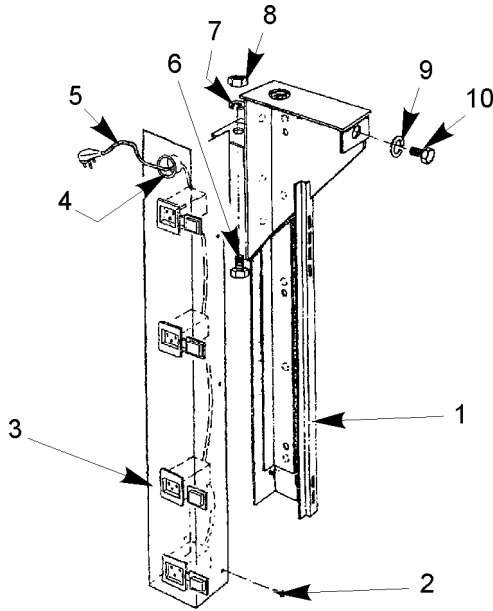
27" Hanging Uprights

Item	Part No.	Qty.	Description
*	5185357	1	RH Hanging Upright Assy.
*	5185358	1	LH Hanging Upright Assy.
1	5184743	1	RH Shelf Upright Weld Assy.
	5184744	1	LH Shelf Upright Weld Assy.
2	5619204	4	Screw
3	5184727	1	RH Upright Close-off
	5184728	1	LH Upright Close-off
4	5220491	1	Harness
5	5123674	1	Strain Relief
6	5148762	1	Machine Bolt
7	5100643	1	Nut
8	5628631	2	Lockwasher
9	5148762	1	Machine Bolt

Item	Part No.	Qty.	Description
*	5949605	1	RH Hanging Upright Assy.
*	5949606	1	LH Hanging Upright Assy.
1	5949586	1	RH Shelf Upright Weld Assy.
	5949587	1	LH Shelf Upright Weld Assy.
2	5619204	4	Screw
3	5949604	1	RH Upright Close-off
	5949603	1	LH Upright Close-off
4	5148762	1	Machine Bolt
5	5628631	1	Lockwasher
6	5100643	1	Nut
7	5628631	1	Lockwasher
8	5148762	1	Machine Bolt



OPTIONAL CASE ACCESSORIES - (CONT'D)
HANGING UPRIGHTS - LDRL



49" Hanging Uprights

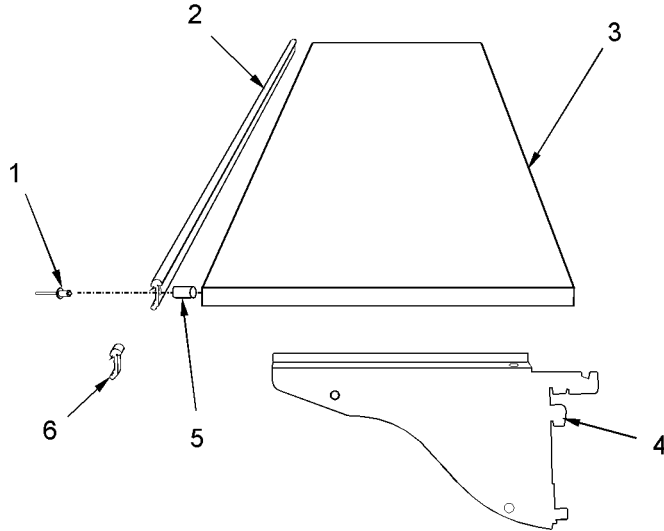
Item	Part No.	Qty.	Description
*	5941167	1	RH Hanging Upright Assy.
*	5941168	1	LH Hanging Upright Assy.
1	5941163	1	RH Shelf Upright Weld Assy.
	5941164	1	LH Shelf Upright Weld Assy.
2	5619204	6	Screw
3	5941165	1	RH Upright Close-off
	5941166	1	LH Upright Close-off
4	5123674	1	Strain Relief
5	5220487	1	Harness
6	5148762	1	Machine Bolt
7	5628631	1	Lockwasher
8	5100643	1	Nut
9	5628631	1	Lockwasher
10	5148762	1	Machine Bolt

Full Length Hanging Uprights w/ Base

Item	Part No.	Qty.	Description
*	5184665	1	Opt. 48" Base w/ Full Length Hanging Upright Assy.
1	5198994	1	Base Shelf Assy.
	5198930	1	48" Base Shelf
	5086984	2	Base Shelf Support
	5105037	8	Rivet
2	5189565	1	LH Full Length Hanging Upright Assy.
	5183054	1	LH Shelf Upright Weld Assy.
	5183458	1	LH Upright Close-off
	5220487	1	Harness
	5123674	1	Strain Relief
3	5189564	1	RH Full Length Hanging Upright Assy.
	5183053	1	RH Shelf Upright Weld Assy.
	5183457	1	RH Upright Close-off
	5619204	3	Screw
	5148762	2	Machine Screw
	5628631	2	Washer
	5100643	1	Nut



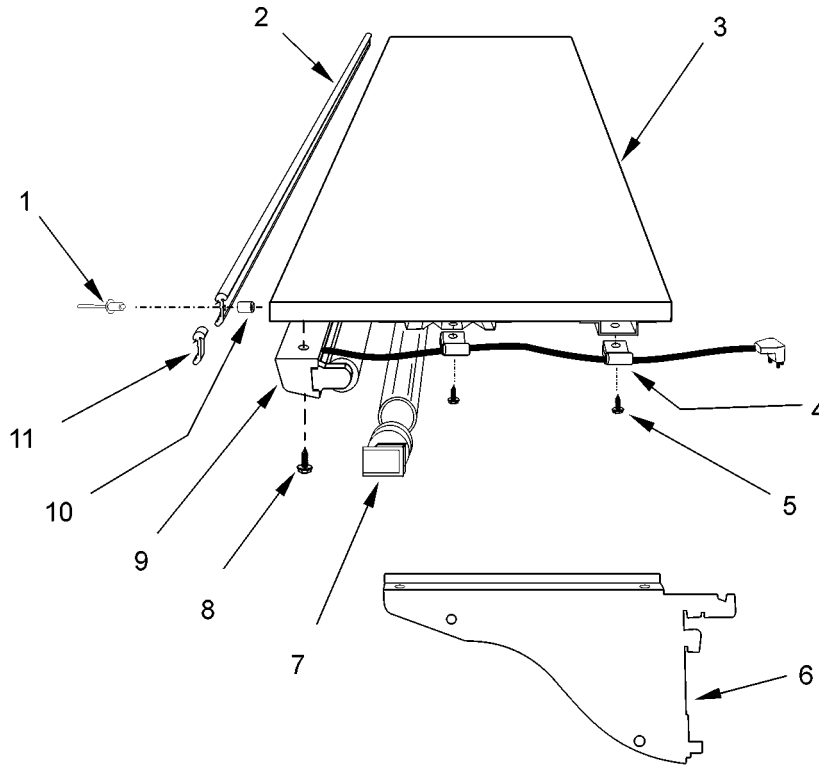
OPTIONAL CASE ACCESSORIES - (CONT'D)
 SHELF ASSEMBLIES - LDRL
 Optional 48" Wide Shelves w/o Lights



Item	Part No.	Qty.	Description	Item	Part No.	Qty.	Description
*	5619374	1	18" x 48" Shelf Assy., Ptd.	*	5198722	1	22" x 48" Shelf Bench Assy., Ptd.
*	5955922	1	18" x 48" Shelf Assy., MB SS	*	5237623	1	22" x 48" Shelf Bench Assy., MB SS
*	5619375	1	20" x 48" Shelf Assy., Ptd.	3	5220613	1	18" x 48" Shelf, Ptd.
*	5955923	1	20" x 48" Shelf Assy., MB SS		5950572	1	18" x 48" Shelf, MB SS
*	5185961	1	22" x 48" Shelf Assy., Ptd.		5220614	1	20" x 48" Shelf, Ptd.
*	5958906	1	22" x 48" Shelf Assy., MB SS		5950573	1	20" x 48" Shelf, MB SS
1	5144974	4	Rivet		5220615	1	22" x 48" Shelf, Ptd.
	5104702	4	Rivet (22" MB SS shelf only)		5958907	1	22" x 48" Shelf, MB SS
2	5236879	1	Narrow Card Molding, 48"	4	5088412	1	RH Shelf Bracket, 18" Ptd.
*	5184620	1	18" x 48" Shelf Bench Assy., Ptd.		5088413	1	LH Shelf Bracket, 18" Ptd.
*	5955917	1	18" x 48" Shelf Bench Assy., MB SS		5185812	1	RH Shelf Bracket, 20" Ptd.
*	5184621	1	20" x 48" Shelf Bench Assy., Ptd.		5185813	1	LH Shelf Bracket, 20" Ptd.
*	5955918	1	20" x 48" Shelf Bench Assy., MB SS		5185814	1	RH Shelf Bracket, 22" Ptd.
					5185815	1	LH Shelf Bracket, 22" Ptd.
				5	5127438	4	Spacer (exc. MB SS shelves)
				6	5941919	1	Card Molding Joint Trim



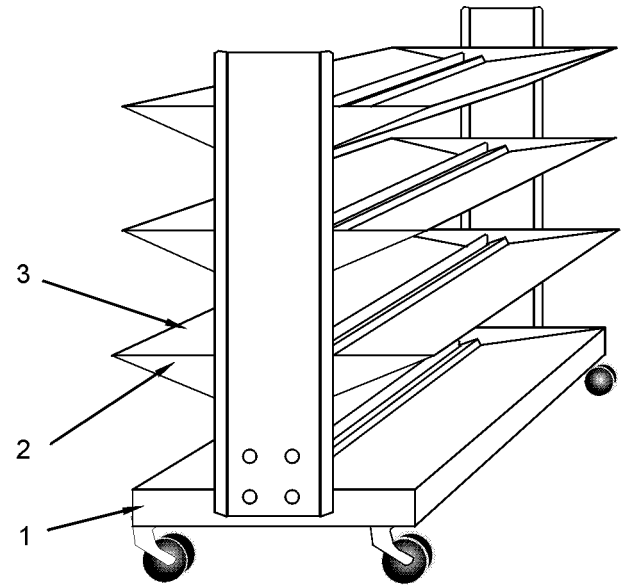
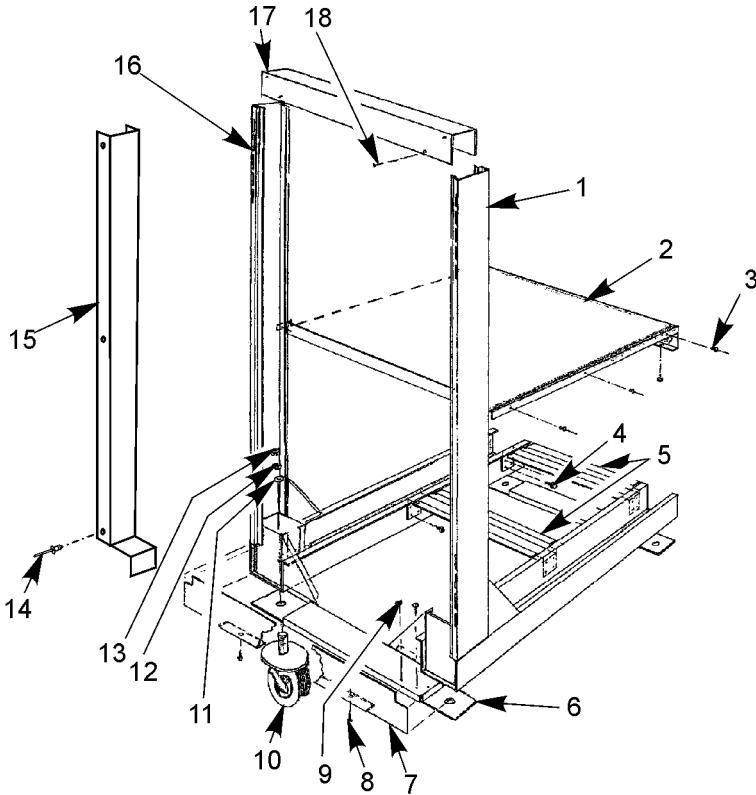
OPTIONAL CASE ACCESSORIES - (CONT'D)
 SHELF ASSEMBLIES - LDRL
 Optional 48" Wide Shelves w/ T-8 Lights



Item	Part No.	Qty.	Description	Item	Part No.	Qty.	Description
*	5991103	1	20" Lighted Shelf Assy., Ptd.		5185815	1	LH Shelf Bracket, 20" Ptd.
*	5991104	1	22" Lighted Shelf Assy., Ptd.		5100212	2	Screw
1	5144974	4	Rivet	7	5637996	1	Lamp
2	5236879	1	Narrow Card Molding, 48"		5981627	2	Lampshield Cap
3	5220614	1	20" x 48" Shelf, Ptd.	8	5619204	2	Screw
	5220615	1	22" x 48" Shelf, Ptd.	9	5991055	1	Light Channel Assy., Ptd.
4	5100902	1	Clamp		5220488	1	Shelf Harness
5	5183536	3	Screw		5232279	2	Lampholder w/ 12" Lead
6	5185812	1	RH Shelf Bracket, 20" Ptd.		5991029	1	T-8 Ballast, 2-Lamp
	5185813	1	LH Shelf Bracket, 20" Ptd.	10	5127438	4	Spacer
	5185814	1	RH Shelf Bracket, 22" Ptd.	11	5941919	1	Card Molding Joint Trim



OPTIONAL CASE ACCESSORIES - (CONT'D)
BASE SHELF CART, EGG CART AND MILK DOLLY

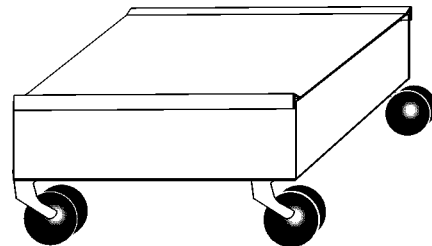


Optional Stainless Steel Base Shelf Cart

Item	Part No.	Qty.	Description
*	5189523	1	48" Base Shelf Cart Assy. w/ 6" Wheels
*	5229210	1	48" Base Shelf Cart Assy. w/ 3" Wheels
1	5229207	1	LH Cart Upright Weld Assy.
2	5195193	1	Base Shelf
3	5105037	6	Rivet
4	5183536	24	Screw
5	5189518	2	Bottom Support
6	5195195	2	Spreader Plate
7	5195191	1	Rear Base Close-off
8	5183536	2	Screw
9	5183536	2	Screw
10	5184361	4	6" Caster w/ Threaded Stem
	5229179	4	3" Caster w/ Threaded Stem
11	5100982	4	Washer
12	5211201	4	Lockwasher
13	5100643	4	Nut
14	5105037	12	Rivet
15	5229208	2	Upright Close-off
16	5229206	1	RH Cart Upright Weld Assy.
17	5189506	1	Rear Cross Support
18	5183536	8	Screw

Optional Egg Cart with Shelves

Item	Part No.	Qty.	Description
*	5186608	1	27" Egg Cart Assy.
1	5186609	1	27" Base Assy.
-	5120943	18	#7 x 1/2" Tappit Screw
-	5103996	6	#8 Lockwasher
2	5197222	6	Shelf Bracket Assy.
-	5626215	1	Outer Support Plate
-	5197223	1	RH Bracket
-	5197224	1	LH Bracket
3	5186596	6	Front Shelf Assy.
-	5186597	1	Shelf Weld Assy.
-	5186599	1	Basket Back Stop
-	5120943	5	#7 x 1/2" Tappit Screw

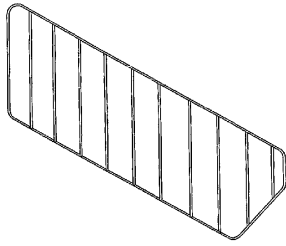


Optional Two-Stack Milk Dolly

Item	Part No.	Qty.	Description
*	5184306	1	Two-Stack Milk Dolly Assy.
-	5184720	1	Frame Weld Assy.
-	5184721	1	Upper Panel
-	5184361	4	Caster
-	5100982	4	Washer, 1/2"
-	5101009	4	Lockwasher, 1/2"
-	5100643	4	Nut, 1/2"-13

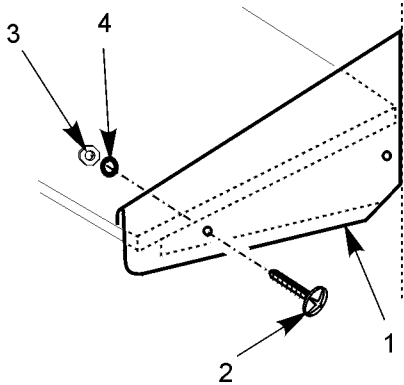


OPTIONAL CASE ACCESSORIES - (CONT'D)
SHELF DIVIDER, SHELF END STOP AND THERMOMETERS



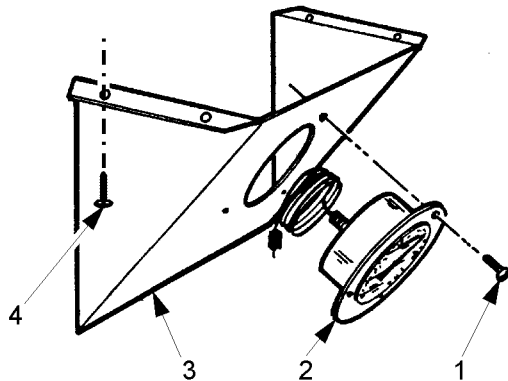
Wire Shelf Divider

Item	Part No.	Qty.	Description
-	5188224	1	Wire Divider, Chrome Plated



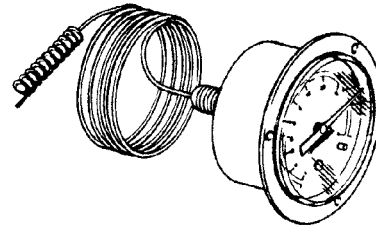
Shelf End Stop for 18" Shelves

Item	Part No.	Qty.	Description
*	5625258	1	Shelf End Stop Assy.
1	5625257	1	Shelf End Stop
2	5111197	2	Screw
3	5111198	2	Nut
4	5103996	2	Lockwasher

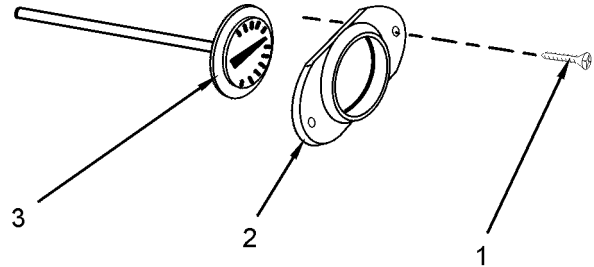


2" Dial Thermometers

Item	Part No.	Qty.	Description
*	5081504	1	Thermometer Assembly
1	5111242	2	Screw
2	5204006	1	2" Dial Thermometer
3	5204762	1	Thermometer Housing
4	5199134	4	Screw

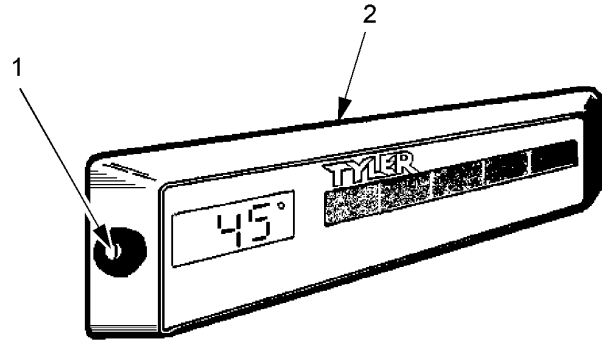


Item	Part No.	Qty.	Description
-	5204006	1	2" Dial Thermometer



1" Dial Thermometer

Item	Part No.	Qty.	Description
*	5980450	1	Thermometer Assembly
1	5319883	2	Screw
2	---	1	Mounting Ring (furnished with thermometer)
3	5203829	1	1" Dial Thermometer



Digital Solar Thermometer

Item	Part No.	Qty.	Description
*	5230908	1	Digital Thermometer Assy., °F
*	5994258	1	Digital Thermometer Assy., °C
1	5230884	2	Screw
2	5239500	1	Digital Thermometer, °F
	5239501	1	Digital Thermometer, °C