

SPECIFICATION SHEET

• LFSC5 GLASS FRONT FROZEN FOOD / ICE CREAM SPOT MERCHANDISER (SELF-CONTAINED) •

Self-Contained Refrigeration & Defrost Data:

CASE USAGE	REFRIGERANT (R404A) DESIGN PRESSURE		DISCHARGE AIR		DEFROSTS		THERMOSTAT SETTINGS		REFRIGERATION CHARGE (LBS / CASE)
	LOW SIDE (PSIG)	HIGH SIDE (PSIG)	TEMPERATURE (°F)	VELOCITY (FPM)	DEFROSTS PER DAY	DURATION TIME (MIN.)	CUT-IN (°F)	CUT-OUT (°F)	
FROZEN FOOD	183	400	-10	219*	2	36	N/A	N/A	3.1
ICE CREAM	183	400	-19	219*	2	36	N/A	N/A	3.1

* Air velocity measured 1 hour after defrost at the discharge air duct using an ALNOR JR. velometer with a scoop.

Electrical Data:

CASE ELECTRICAL CIRCUIT: One 120V Electrical Power Supply is required for this Self-Contained case.

This 120V Power Supply runs all circuits and components in this unit.

Self-Contained Electrical Data (120 Volt)

MODEL	SELF-CONTAINED COMPRESSOR			M.C.A.***	M.O.P.****	TOTAL ANTI-SWEATS		CONDENSATE HEATER*****		DEFROST HEATER	
	UNIT	R.L.A.*	L.R.A.**	AMPS	AMPS	AMPS	WATTS	AMPS	WATTS	AMPS	WATTS
LFSC5	120V 60Hz 1 Ph, 3/4 HP	15.2	59.0	21.0	30.0	0.9	108	3.5	420	8.7	1,044

* Run Load Amperage (includes the condenser fan).

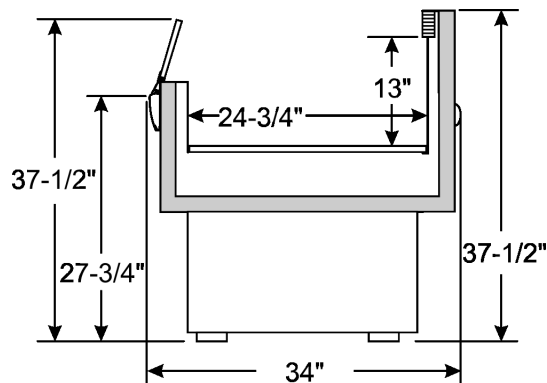
** Locked Rotor Amperage.

*** Minimum Circuit Ampacity (includes condenser fan, condensate heater, defrost heater and anti-sweat heaters)

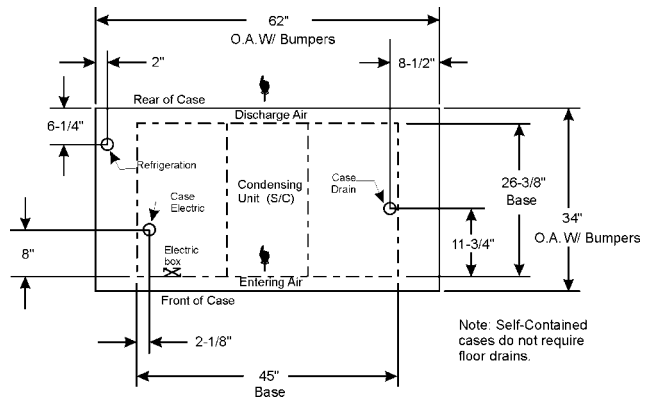
**** Maximum Overcurrent Protection.

***** Condensate Heater pan equipped with a float switch.

LFSC5 CROSS SECTION



LFSC5 FLOOR PLAN



CASE BTUH REQUIREMENTS are calculated to produce approximately the indicated entering-air temperature with absolute maximum operating ambient limits of **75°F & 55RH**.

The information contained herein is based on technical data and tests that we believe are reliable, and is intended for use by persons having technical skill at their own discretion and risk. Since conditions of use are outside of Tyler's control, we cannot assume any liability for results obtained or damages incurred through the applications of the data presented. SPECIFICATIONS ARE SUBJECT TO CHANGE WITHOUT NOTICE.