

## SPECIFICATION SHEET

### • NHDHP EXTENDED HEIGHT MULTISHELF DAIRY/DELI MERCHANDISERS •

**Refrigeration Data:**

MODEL	CASE LENGTH	CASE USAGE	CAPACITY (BTUH / FT)		EVAPORATOR (°F)	UNIT SIZING (°F)	DISCHARGE AIR		AVG. REF. CHARGE (LBS/FT)
			PARALLEL	CONVENTIONAL			TEMPERATURE (°F)	VELOCITY (FPM)	
NHDHPL	6'/8'/12'	MED TEMP	1,327*	1,474*	+28**†	+26†	+31	268***	0.57****
NHDHPM	6'/8'/12'	MED TEMP	1,281*	1,423*	+28**†	+26†	+31	268***	0.57****

\* Capacity data listed for cases with 2 rows of T-8 canopy lights and 4 rows of unlighted shelves. Adjustments must be made to this base rating for each option installed on this case. ADD 23 BTUH/FT for each row of lighted shelves. For cases using peg bars, ADD 274 BTUH/FT to parallel load or 304 BTUH/FT to conventional load. NOTE: Baffles are required above each peg bar row to provide proper air flow around the food products. For sizing all refrigeration equipment other than TYLER, use conventional BTUH values.

\*\* Evaporator temperature is based on the saturated pressure leaving the case.

\*\*\* Air velocity measured 1 hour after defrost at the top discharge air duct using an ALNOR JR. velometer with a scoop. DEDUCT 20 FPM for case using peg bars.

\*\*\*\*This is an average refrigeration charge per foot based on R22 and R404A refrigerant usage.

† ADD 2°F for case using produce insert.

FOR SPECIFIC COMPRESSOR SIZING INFORMATION, REFER TO TYLER APPLICATIONS FOR RACK SYSTEM COMPRESSORS AND/OR THE COMPRESSOR MANUFACTURERS FOR SINGLE COMPRESSORS. FOR LINE SIZING INFORMATION, REFER TO THE MISCELLANEOUS SECTION "BUFF" IN THE TYLER SPECIFICATION GUIDE.

**Electrical Data:**

Fans and Heaters (120 and 208 Volt)

MODEL	CASE LENGTH	FANS / CASE	TOTAL STANDARD FANS		TOTAL ECM FANS		TOTAL ANTI-SWEATS (120V)	
			AMPS	WATTS	AMPS	WATTS	DISCHARGE AIR AMPS	DISCHARGE AIR WATTS
NHDHP(L/M)	6'	2	0.72	84.0	0.70	52.0	N/A	N/A
NHDHP(L/M)	8'	2	0.72	84.0	0.70	52.0	N/A	N/A
NHDHP(L/M)	12'	3	1.08	126.0	1.05	78.0	N/A	N/A

T-8 Lighting with Electronic Ballasts (120 Volt)

MODEL	CASE LENGTH	CANOPY LIGHTS* --- PER ROW				SHELF LIGHTS - PER ROW										NOSE LIGHT		MAX. LIGHTING (8 ROWS)	
		AMPS		WATTS		AMPS					WATTS					AMPS	WATTS	AMPS	WATTS
		1	2	1	2	1	2	3	4	5	1	2	3	4	5				
NHDHP	6'	0.40	0.75	48	90	0.60	0.90	1.20	1.50	1.90	72	108	144	180	228	0.40	48	3.05	366
NHDHP	8'	0.50	0.95	60	114	0.90	1.20	1.60	1.90	2.40	108	144	192	228	288	0.50	60	3.85	462
NHDHP	12'	0.70	1.40	84	168	1.35	1.80	2.40	2.85	3.55	162	216	288	342	426	0.70	84	5.65	678

\* Standard lighting for this case is 2 rows of T-8 canopy lights.

**Defrost Data:**

DEFROST TYPE*	DEFROSTS PER DAY	DURATION TIME (MIN)**	ELEK. THERMOSTAT / AIR SENSOR SETTINGS			EPR SETTINGS ***		CONVENTIONAL COMPRESSOR SETTINGS*****				DEFROST WATER (LB / FT / DAY)
			USAGE	CUT IN	CUT OUT	R22 (PSIG)	R404A (PSIG)	R22 (PSIG) CUT-IN CUT-OUT		R404A (PSIG) CUT-IN CUT-OUT		
TIME OFF	6	24	SHELVING	32°F	30°F	52	66	50	36	64	47	5.5
TIME OFF	6	26	PEG BARS / MIXED****	30°F	28°F	50	64	48	36	62	47	8.7
TIME OFF	6	24	PRODUCE INSERT	34°F	32°F	55	70	53	36	67	47	2.0

\* All high performance cases use OFF CYCLE defrost

\*\* NOTE: 24 or 26 minutes is for EPR with suction stop for defrost isolation. Defrost times increases by four minutes when defrost isolation is by pump down.

\*\*\* If EPR is utilized, use the settings shown in the chart. ADD 0.5# to EPR setting for each 1000 foot rise in elevation.

\*\*\*\* NOTE: Mixed line-up is peg bars mixed with shelving in same line-up.

\*\*\*\*\* Required setup for a conventional unit uses an electronic thermostat to assure accurate temperature control.

CASE-TO-CASE SUCTION LINE SUB-FEED BRANCH LINE SIZING														
MODEL	6'	8'	10'	12'	16'	20'	24'	28'	32'	36'	40'	44'	48'	52"
NHDHP R22	7/8"	7/8"	7/8"	7/8"	7/8"	1 1/8"	1 1/8"	1 1/8"	1 3/8"	1 3/8"	1 3/8"	1 3/8"	1 3/8"	1 3/8"

**CASE CIRCUITS:** This case requires a 120V circuit for fans, lights and anti-sweat heaters.

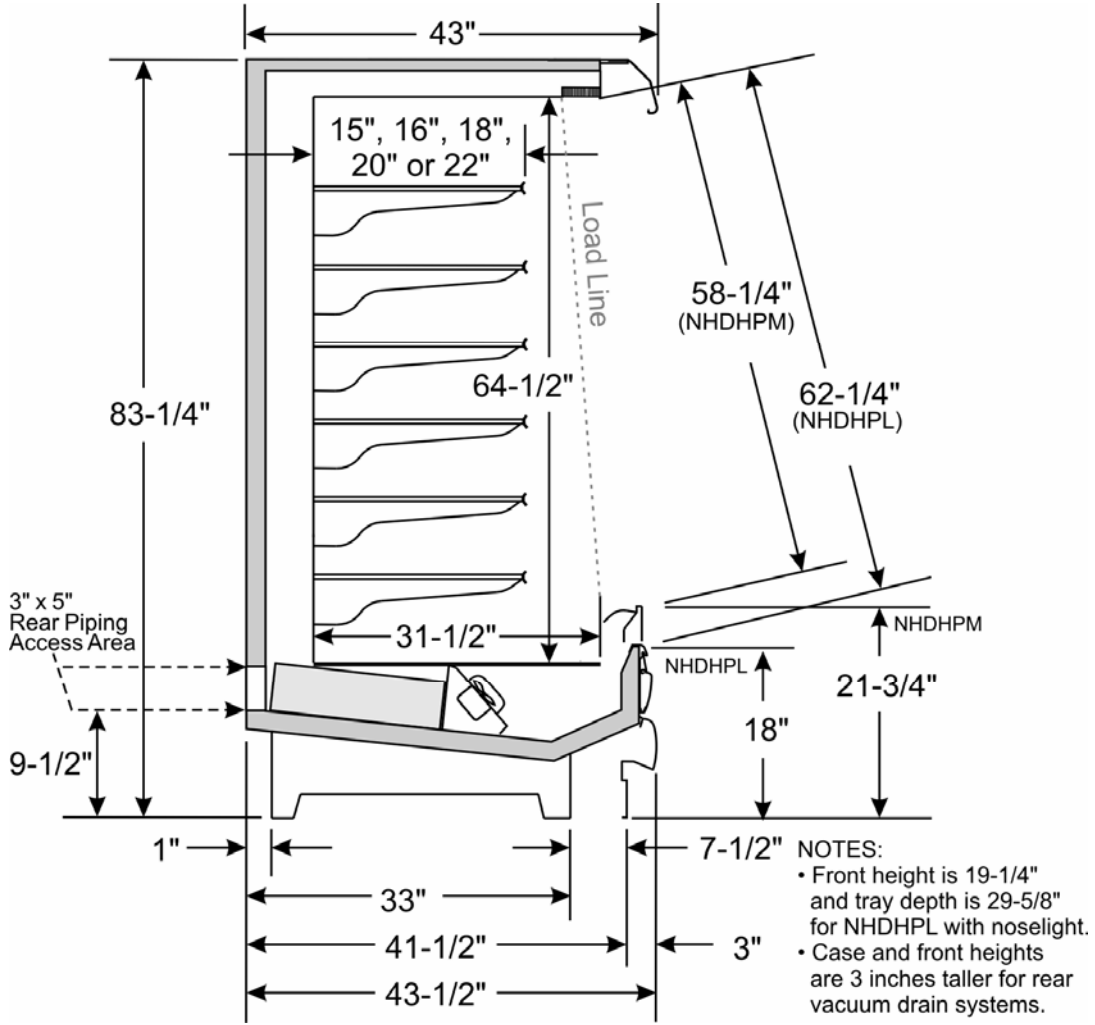
**SHELVING NOTES:** Shelving widths available for these cases are 15", 18", 20" and 22". When two sizes are used, the smaller must be used on top.

**UL SANITATION** approved in accordance with ANSI/NSF - 7.

**CASE BTUH REQUIREMENTS** are calculated to produce approximately the indicated entering-air temperature with absolute maximum operating ambient limits of **75°F & 55RH**.

The information contained herein is based on technical analysis and/or tests performed in a controlled lab environment that are consistent with industry practices, and is intended as a reference for system sizing and configuration purposes only and for use by persons having technical skill at their own discretion and risk. Conditions of use are outside of Tyler's control and we do not assume and hereby disclaim any liability for results obtained or damages incurred through application of or reliance on the data presented, including but not limited to specific energy consumption with any particular model or installed application. SPECIFICATIONS ARE SUBJECT TO CHANGE WITHOUT NOTICE.

**NHDHP CROSS SECTION**



**NHDHP FLOOR PLAN**

ALLOW 3" SPACE between the back of this case and the store wall, other cases or coolers to minimize possible condensation problems. FORCED VENTILATION may be necessary in some situations.

