

## SPECIFICATION SHEET

### • NLBS LIFT FRONT CURVED GLASS BAKERY MERCHANDISERS (SELF-CONTAINED) •

#### Self-Contained Refrigeration & Defrost Data:

CASE USAGE	REFRIGERANT (R22) DESIGN PRESSURE		DISCHARGE AIR		DEFROSTS		THERMOSTAT SETTINGS		REFRIGERATION CHARGE (LBS / CASE)	
	LOW SIDE (PSIG)	HIGH SIDE (PSIG)	TEMPERATURE (°F)	VELOCITY (FPM)	DEFROSTS PER DAY	DURATION TIME (MIN.)	CUT-IN (°F)	CUT-OUT (°F)	NLBS-59	NLBS-77
BAKERY	183	400	+36	154*	6	20	37-39	29	3.0	4.0

\* Air velocity measured 1 hour after defrost at the Rear Duct at the back of the Top Shelf.

#### Electrical Data:

**CASE ELECTRICAL CIRCUITS: One 120V Electrical Power Supply is required for Self-Contained cases.**

This 120V Power Supply runs a 120V Circuit that supplies all electrical components used in each case.

#### Self-Contained Electrical Data (120 Volt)

MODEL	SELF-CONTAINED COMPRESSOR			M.C.A.***	M.O.P.****
	UNIT	R.L.A.*	L.R.A.**	AMPS	AMPS
<b>NLBS-59/77</b>	120V 60Hz 1 Ph, 1/4 HP	7.8	29.0	15.0	20.0

\* Run Load Amperage (includes the compressor).

\*\* Locked Rotor Amperage.

\*\*\* Minimum Circuit Ampacity (includes all electrical components and options; condenser fans, evaporator fans, lights & compressor unit)

\*\*\*\* Maximum Overcurrent Protection.

**NOTE:** These units do not require a condensate pan heater. The water is dissipated via hot gas loop off the compressor.

#### Self-Contained Evaporator Fans and Heaters (120 Volt)

MODEL	CASE LENGTH	FANS / CASE	TOTAL STANDARD FANS		TOTAL ECM FANS		ANTI-SWEAT HEATER	
			AMPS	WATTS	AMPS	WATTS	AMPS	WATTS
<b>NLBS</b>	59"	2	0.68	60.4	0.44	22.0	0.50	61.0
<b>NLBS</b>	77"	2	0.68	60.4	0.44	22.0	0.70	82.0

#### Self-Contained T-8 Lighting with Electronic Ballasts (120 Volt)

MODEL	CASE LENGTH	CANOPY LIGHTS		SHELF LIGHTS – PER ROW						MAXIMUM LIGHTING *	
		AMPS 2 ROWS	WATTS 2 ROWS	AMPS			WATTS			AMPS (5 ROWS)	WATTS (5 ROWS)
				1 ROW	2 ROWS	3 ROWS	1 ROW	2 ROWS	3 ROWS		
<b>NLBS</b>	59"	0.50	60.0	0.35	0.50	0.70	42.0	60.0	84.0	1.20	144.0
<b>NLBS</b>	77"	0.66	79.2	0.56	0.75	0.94	67.2	90.0	112.8	1.60	192.0

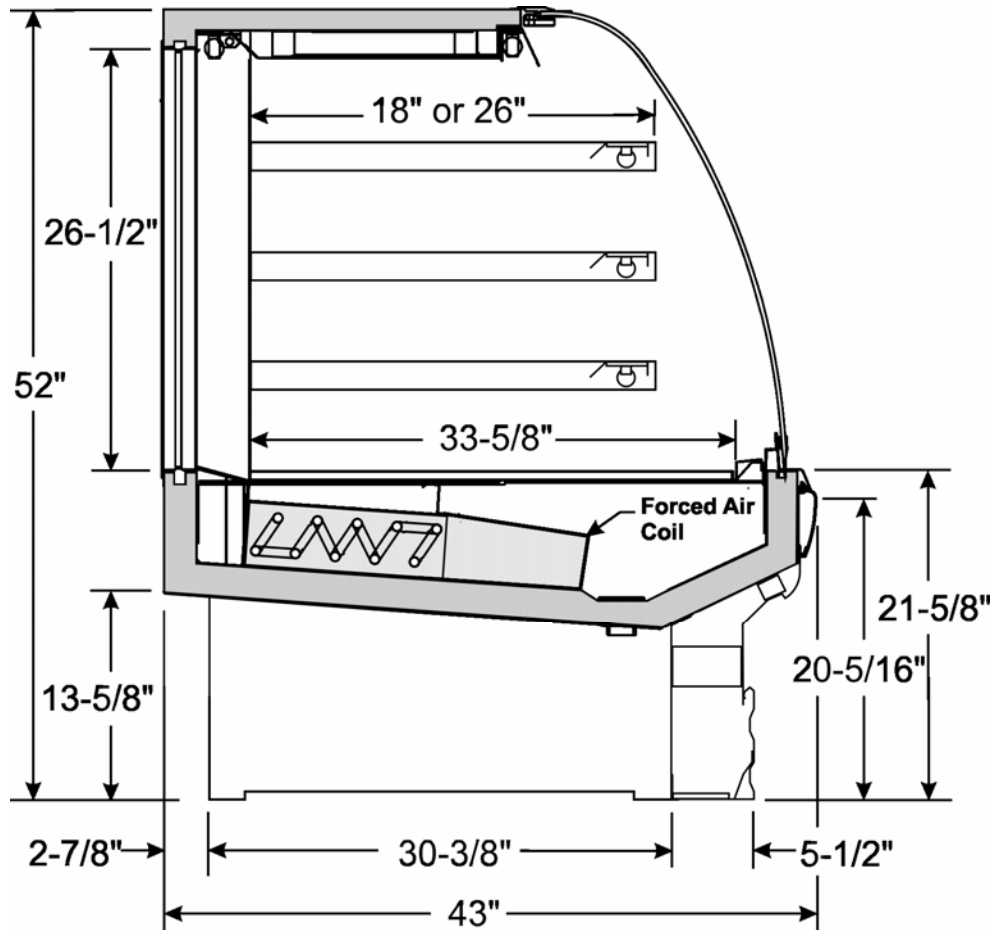
\* For cases with 2 rows of canopy lights and 3 rows of shelf lights.

**NSF CERTIFIED** to meet ANSI/NSF - 7.

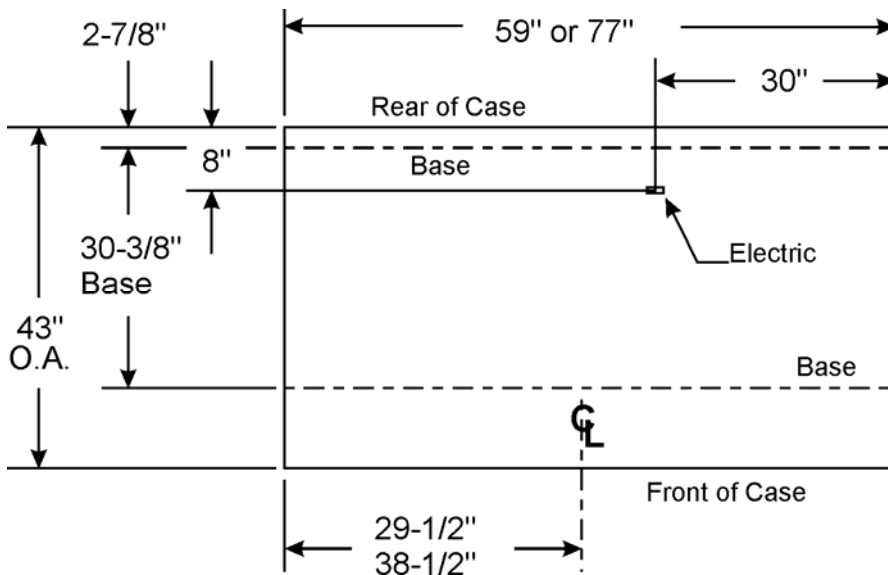
**CASE BTUH REQUIREMENTS** are calculated to produce approximately the indicated entering-air temperature with absolute maximum operating ambient limits of **75°F & 55RH**.

The information contained herein is based on technical analysis and/or tests performed in a controlled lab environment that are consistent with industry practices, and is intended as a reference for system sizing and configuration purposes only and for use by persons having technical skill at their own discretion and risk. Conditions of use are outside of Tyler's control and we do not assume and hereby disclaim any liability for results obtained or damages incurred through application of or reliance on the data presented, including but not limited to specific energy consumption with any particular model or installed application. SPECIFICATIONS ARE SUBJECT TO CHANGE WITHOUT NOTICE.

**NLBS CROSS SECTION**



**SELF-CONTAINED FLOOR PLAN**



Add 1-1/2" for each Standard Patch End or 1" for each Insulated Partition.

**Note: Self-Contained cases do not require a floor drain.**