

XDWFC - WIDE ISLAND FROZEN FOOD

Tyler Refrigeration Corporation

450 Btuh/Ft. @ -25°F Suction & -15°F Entering Air Temp.

CASE MODELS	LINEAL FEET	75°F (24°C) Store 1000 Btuh/hr Req'd.	CONDENSING UNIT SELECTION CHART R22					LINE SIZING					ELECTRICAL DATA								
			AIR ENTERING THS CONDENSING					SUCTION LINE					208 VOLT DEFROST			120 VOLT DATA					
			85F	90F	95F	100F	105F	M	E	T	E	R	ONE PHASE TOTAL AMPS	DEFROST CONTROL REQD 3-PHASE	THREE PHASE HIGH LEG(S)	Fan Amps/Hef Std.	ANTI-SWEAT DWFC	LFS SHELF LITES PER ROW			
			30C	32C	35C	38C	41C	15	30	45	60	75							Equivalent Feet	50	100
8' 12'	8	3.6	190L								3/8"	13.8	TG-30		.74	1.0	1.8	2.4	1.2		
	12	5.4	200L								7/8"	20.6			1.11	1.5	2.4	3.3	1.8		
	16	7.2	300L									27.6	TG-40 TG-3-30	24A	1.48	2.0	3.6	4.8	2.4		
	20	9.0	D301L									34.4	TG-50 TG-3-40	30A	1.85	2.5	4.2	5.7	3.0		
	24	10.8	D401L									41.2	TG-3-50	36A	2.22	3.0	4.8	6.6	3.6		
	28	12.6	D601L										TG-3-40	30A	2.59	3.5	6.0	8.1	4.2		
	32	14.4	D651L												2.96	4.0	6.6	9.0	4.8		
	36	16.2	D661L												3.33	36A	4.5	7.2	9.9	5.4	
	40	18.0	D751L												3.70	42A	5.0	8.4	11.4	6.0	
	44	19.8													4.07	TG-3-50-50	30/36A	5.5	9.0	12.3	6.6
	48	21.6													4.44		36/36A	6.0	9.6	13.2	7.2
	52	23.4													4.81		36/30A	6.5	10.8	14.7	7.8
	56	25.2													5.18		36/36A	7.0	11.4	15.6	8.4
	60	27.0													5.55		36/36A	7.5	12.0	16.5	9.0

- ALFS, AHFS, & A2LFS are designations for shelving superstructures which may have 1, 2, or 3 rows of 30W lamps.
- CASE CIRCUITS: In addition to the 208V defrost circuit, there is the 120V case Fan circuit plus the 120V case anti-sweat heater circuit. Anti-sweat heat is not required 100% of the time in most stores and the use of a Tyler ES-2 Energy Saver control to cycle this circuit as required is strongly recommended. Shelf or canopy lights require a separate 120V circuit which can be switched at the back room for convenience in controlling the lights.
- Meat rating 423 Btuh/Ft. @ +15° Suct. & +24° Entering air temp. Dairy rating 410 Btuh/Ft. @ +25° Suct. & +35° Entering air temp.

ANNUAL COMPARATIVE OPERATING COST PER FOOT OF CASE (C.O.C.)

CONTROL SETTINGS (R-22)

CASE	Fans/HEF*	A/S Heat	Lights	208V Defrost	Condensing Unit	TOTALS @ 1c/KWH	DEFROST CONTROL			PRESSURE
	.767/.438	1.022		.981	\$7.793	\$10.563	Per Day	Mode	Failsafe	CUT IN:
8'	70w/40w	106w		2864	w/Opt HEF Motors	\$10.234	1	Electric	46	15-22#
12'	105w/60w	140w		4300	NET SAVINGS	\$.329	2-3	Gas Defr.	16-20	CUT OUT:
									Min.	4-8#

Case Ft. x C.O.C. = "Cost per Year" @ 1c/KWH. USE TOTALS TO COMPARE CASES & OPTIONS! Watts @ 115V *HEF = Hi-Efficiency Fans.

CASE BTUH REQUIREMENTS are calculated to produce approximately the indicated entering case air temp with operating ambient limits of 75F & 55% RH. SUCTION LINE SIZING: Select the point of intersection of the case line-up and the equivalent footage. Allow for all fittings in addition to the actual line length. STEP SIZING is suggested for selections falling in the first half of a size range. Pipe one size smaller can be used on the 50' of the run closest to the cases when the entire run is 100 equivalent feet or more. LIQUID LINE SIZING is based on 5lb. pressure drop in 150' of line. See complete line size charts in front of the TYLER SPEC GUIDE BOOK.

The information contained herein is based on technical data and tests which we believe to be reliable and is intended for use by persons having technical skill, at their own discretion and risk. Since conditions of use are outside Tyler's control, we can assume no liability for results obtained or damages incurred through the applications of the data presented. SPECIFICATIONS ARE SUBJECT TO CHANGE WITHOUT NOTICE. Printed in the U.S.A.

Tyler Spec Sheet

LT-9

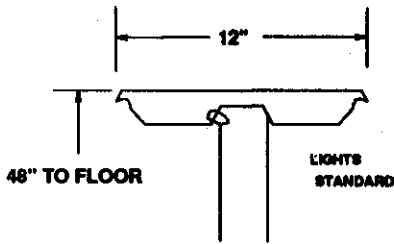
WIDE ISLAND FROZEN FOOD

XDWFC

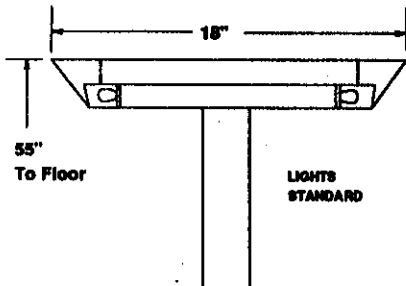
SG0133 Repl. 12/89 Rev. 10/92

WIDE ISLAND FROZEN FOOD & ICE CREAM CASES

CROSS SECTION

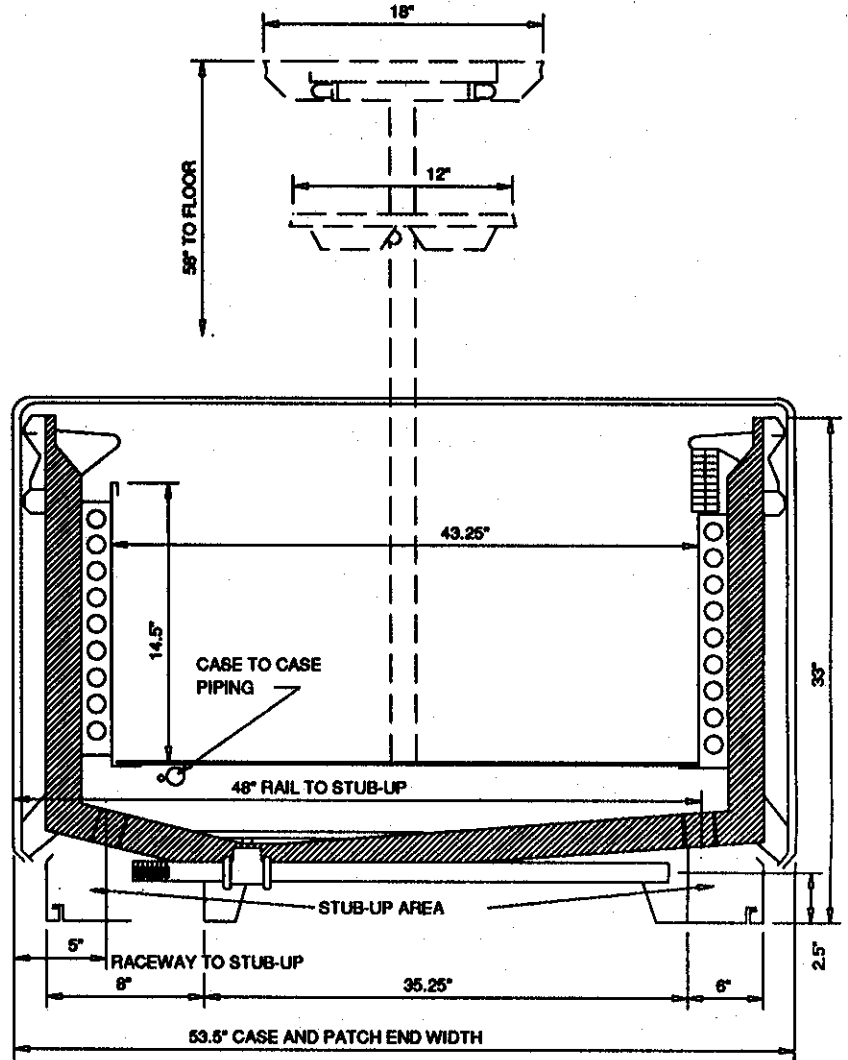


**Models A8LF & A12LFS
Shelf Superstructure**

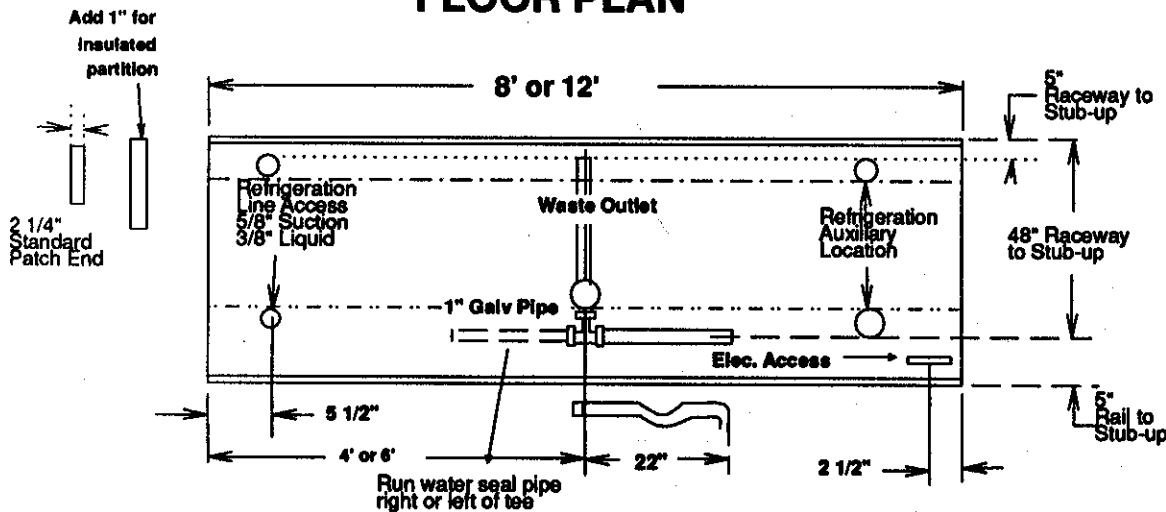


**Models A8HFS & A12HFS
Shelf Superstructure**

All dimensions are nominal



FLOOR PLAN



STUB-UP NOTES:
One Floor Drain can serve up to two cases per drain. One electrical Stub-up can serve a number of cases depending on the circuits required-utilizing the continuous wire raceway(s) on the front of the cases. One Refrig. stub-up can serve several or all cases on a line-up with case to case piping. Max 1 5/8" for case to case piping.

XDWFIC - WIDE ISLAND ICE CREAM

Tyler Refrigeration Corporation

550 Btu/h.Ft. @ -35°F Suction & -25°F Entering Air Temp.

CASE MODELS	LINEAL FEET	75°F (24°C) Store 1000 Btu/h/Req'd	CONDENSING UNIT SELECTION CHART R22					LINE SIZING					ELECTRICAL DATA					
			AIR ENTERING THS CONDENSING					SUCTION LINE					208 VOLT DEFROST			120 VOLT DATA		
			85F 30C	90F 32C	95F 35C	100F 38C	105F 41C	MET	E	T	E	R	ONE PHASE TOTAL AMPS	DEFROST CONTROL REQD 3-PHASE	THREE PHASE HIGH LEG(S)	Fan Amp Hef Std.	ANTI-SWEAT DFIC W/O SHELF LITES	DFIC WITH SHELF LITES
8' 12'	8	4.4									3/8"	13.8	TG-30		.74 1.0	1.8	2.4	1.2
	12	6.6	300L								7/8"	20.6	TG-30		1.11 1.5	2.4	3.3	1.8
	16	8.8	D301L								1 1/8"	27.6	TG-40 TG-3-30	24A	1.48 2.0	3.6	4.8	2.4
	20	11.0	D401L								1 1/8"	34.4	TG-50 TG-3-40	30A	1.85 2.5	4.2	5.7	3.0
	24	13.2	D501L								1 1/2"	41.2	TG-3-50	36A	2.22 3.0	4.8	6.6	3.6
	28	15.4	D651L								1 1/2"		TG-3-40	30A	2.59 3.5	6.0	8.1	4.2
	32	17.6	D751L								1 3/8"		TG-3-50	36A	2.96 4.0	6.6	9.0	4.8
	36	19.8									1 3/8"			36A	3.33 4.5	7.2	9.9	5.4
	40	22.0	D901L								2 1/8"			43A	3.70 5.0	8.4	11.4	6.0
	44	24.2	D1001L								2 1/8"		TG-3-50-50	30/36A	4.07 5.5	9.0	12.3	6.6
	48	26.4									2 1/8"			36/36A	4.44 6.0	9.6	13.2	7.2
	52	28.6	D1301L								2 1/8"			36/30A	4.81 6.5	10.8	14.7	7.8
	56	30.8									2 1/8"			36/36A	5.18 7.0	11.4	15.6	8.4
	60	33.0									2 1/8"			36/36A	5.55 7.5	12.0	16.5	9.0

- ALFS, AHFS & A2LFS are designations for shelving superstructures which may have 1, 2, or 3 rows of 30w lamps each.
- CASE CIRCUITS: In addition to the 208V defrost circuit, there is the 120V case Fan circuit plus the 120V case anti-sweat heater circuit. Anti-sweat heat is not required 100% of the time in most stores and the use of a Tyler ES-2 Energy Saver control to cycle this circuit as required is strongly recommended. Shelf or canopy lights require a separate 120V circuit which can be switched at the back room for convenience in controlling the lights.

ANNUAL COMPARATIVE OPERATING COST PER FOOT OF CASE (C.O.C.)

CONTROL SETTINGS (R-22)

CASE	Fans/HEF*	A/S Heat	Lights	208V Defrost	Condensing Unit	TOTALS @ 1c/KWH	DEFROST CONTROL			PRESSURE
	.767/438	1.022		.981	\$10.854	\$13.624	Per Day	Mode	Failsafe	CUT IN:
8'	70w/40w	106w		2864	w/Opt.HEF Motors	\$13.295	1	Electric	46	9-15#
12'	105w/60w	140w		4300	NET SAVINGS	\$.329	2-3	Gas Defr.	16-20	CUT OUT:
									Min.	1-5#

Case Ft. x C.O.C. = "Cost per Year" @ 1c/KWH. USE TOTALS TO COMPARE CASES & OPTIONS! Watts @ 115V *HEF = HI-Efficiency Fans.

CASE BTUH REQUIREMENTS are calculated to produce approximately the indicated entering case air temp with operating ambient limits of 75F & 55% RH. SUCTION LINE SIZING: Select the point of intersection of the case line-up and the equivalent footage. Allow for all fittings in addition to the actual line length. STEP SIZING is suggested for selections falling in the first half of a size range. Pipe one size smaller can be used on the 50' of the run closest to the cases when the entire run is 100 equivalent feet or more. LIQUID LINE SIZING is based on 5lb. pressure drop in 150' of line. See complete line size charts in front of the TYLER SPEC GUIDE BOOK.

The information contained herein is based on technical data and tests which we believe to be reliable and is intended for use by persons having technical skill, at their own discretion and risk. Since conditions of use are outside Tyler's control, we can assume no liability for results obtained or damages incurred through the applications of the data presented. SPECIFICATIONS ARE SUBJECT TO CHANGE WITHOUT NOTICE. Printed in the U.S.A.

Tyler Spec Sheet

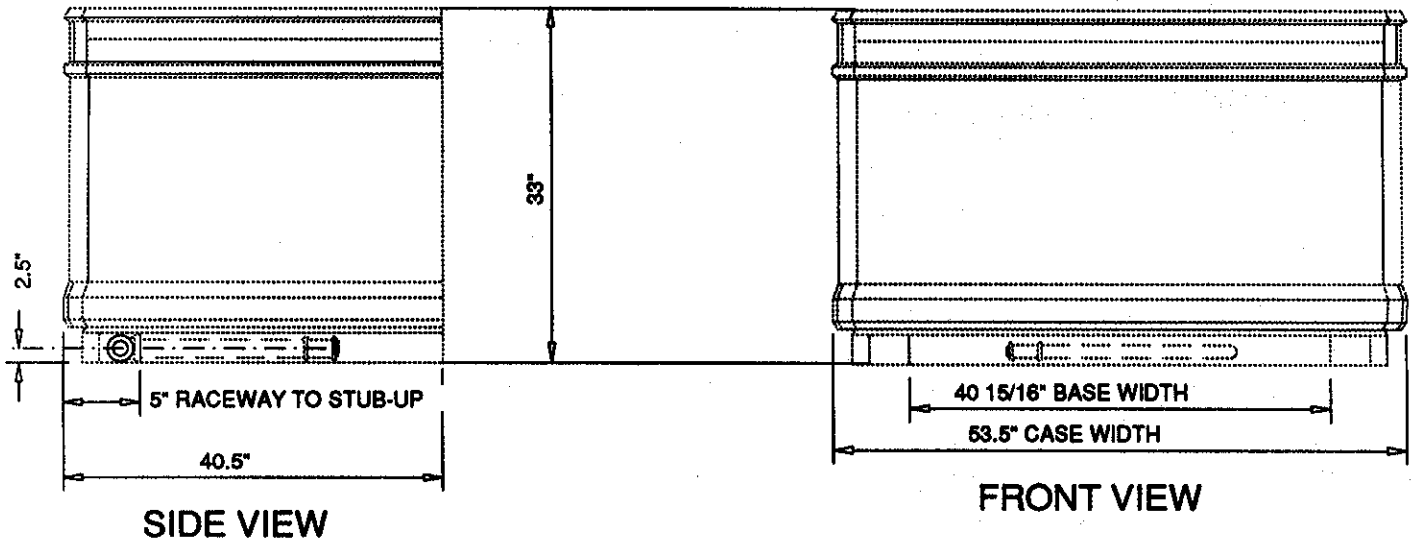
LT-11

WIDE ISLAND ICE CREAM

XDWFIC

SG0135 Repl. 12/89 Rev. 10/92

WIDE ISLAND FROZEN FOOD END CASE SPECS



CASE SPECS:

- ICE CREAM = 2789 Btuh @ -35°F Suction Temp. & -27°F Entering air temperature.
- FROZEN FOOD = 2011 Btuh @ -25°F Suction Temp. & -17°F Entering air temperature.
- MEDIUM TEMP. = 1603 Btuh @ +15°F Suction Temp. & +23°F Entering air temperature.

	Case Amps (1Ph 60 Cycle)		Per day	Defrost Mode	Failsafe(Min.)
	115V Data	A.S. Heater .6A	Case Fans .5A	1	Electric
	Drain Heater .03A		2	Hot Gas	16-20
208V Data	Defrost Heater 6.9A				

