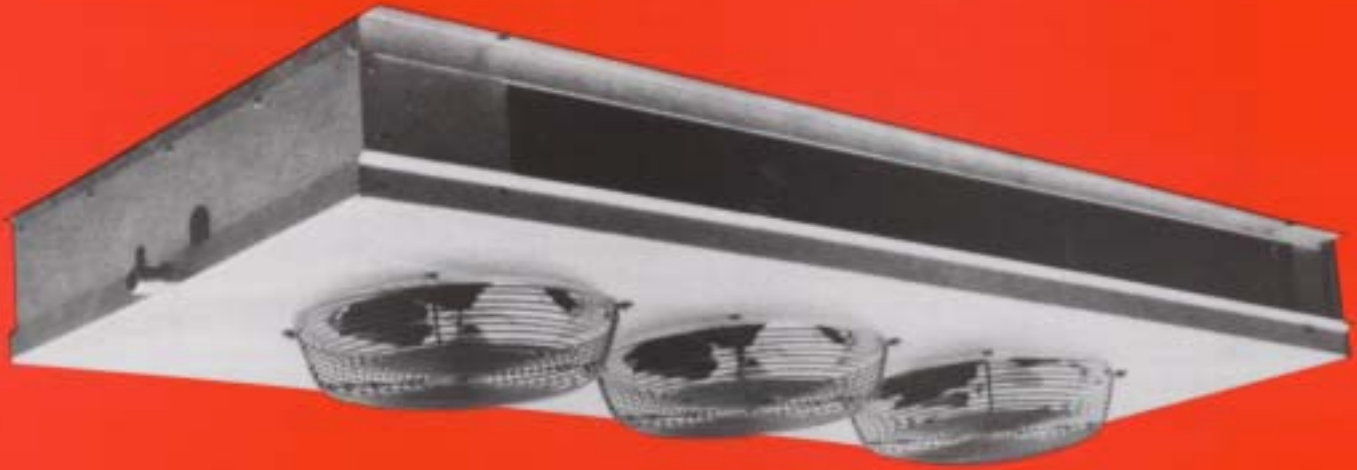




HEIGHT SAVER UNITS

AIR DEFROST

SUBMITTAL
HSA-862A
March 1995
SUPERCEDES
HSA-862



Description:

The Height Saver unit cooler is designed for use in walk-in coolers, and freezers with low headroom clearance. Typical applications would be convenience stores, supermarkets, restaurants, and other cold storage requirements. The Height Saver low profile design takes up less headroom, thus allowing more product to be stored on the shelf. The dual airflow design allows the air to circulate evenly throughout the refrigerated space, providing constant temperature control.

Features:

- Low profile.
- Flush ceiling mount.
- Corrosion resistant aluminum cabinet.
- Dependable ratings, based on laboratory tests.
- Motors are permanently lubricated with built-in overload protection.
- Quiet operation/even air distribution.
- UL listed.
- **N.S.F. Approved.**
- Sloped drain pan for fast condensate drainage.
- Factory wired for quick field installation.
- Hinged drain pan for quick easy access.

PERFORMANCE DATA

6 FPI	MODEL	Capacity BTU/HR (1)		CFM	Motors			Total Fan Motor Amps (2)	
		10°TD	15°TD		Qty.	H.P.	R.P.M.	115/1	230/1
	HSA74	7400	11100	1455	3	16W	1550	3.3	1.7
HSA90	9000	13500	1305	3	16W	1550	3.3	1.7	
HSA100	10000	15000	1200	3	16W	1550	3.3	1.7	
HSA110	11000	16500	2120	4	16W	1550	4.4	2.2	
HSA130	13000	19500	1920	4	16W	1550	4.4	2.2	
HSA156	15600	23400	1760	4	16W	1550	4.4	2.2	
HSA164	16400	24600	2320	5	16W	1550	5.5	2.8	
HSA212	21200	31800	1820	4	16W	1550	4.4	2.2	
HSA240	24000	36000	2650	5	16W	1550	5.5	2.8	
HSA250	25000	37500	2970	6	16W	1550	6.6	3.3	

4 FPI	HSA65	6500	9750	1560	3	16W	1550	3.3	1.7
HSA85	8500	12750	1425	3	16W	1550	3.3	1.7	
HSA95	9500	14250	1305	3	16W	1550	3.3	1.7	
HSA103	10300	15450	2160	4	16W	1550	4.4	2.2	
HSA123	12300	18450	2040	4	16W	1550	4.4	2.2	
HSA142	14200	21300	1920	4	16W	1550	4.4	2.2	
HSA159	15900	23850	2360	5	16W	1550	5.5	2.8	
HSA193	19300	28950	1940	4	16W	1550	4.4	2.2	
HSA218	21800	32700	2850	5	16W	1550	5.5	2.8	
HSA233	23300	34950	3150	6	16W	1550	6.6	3.3	

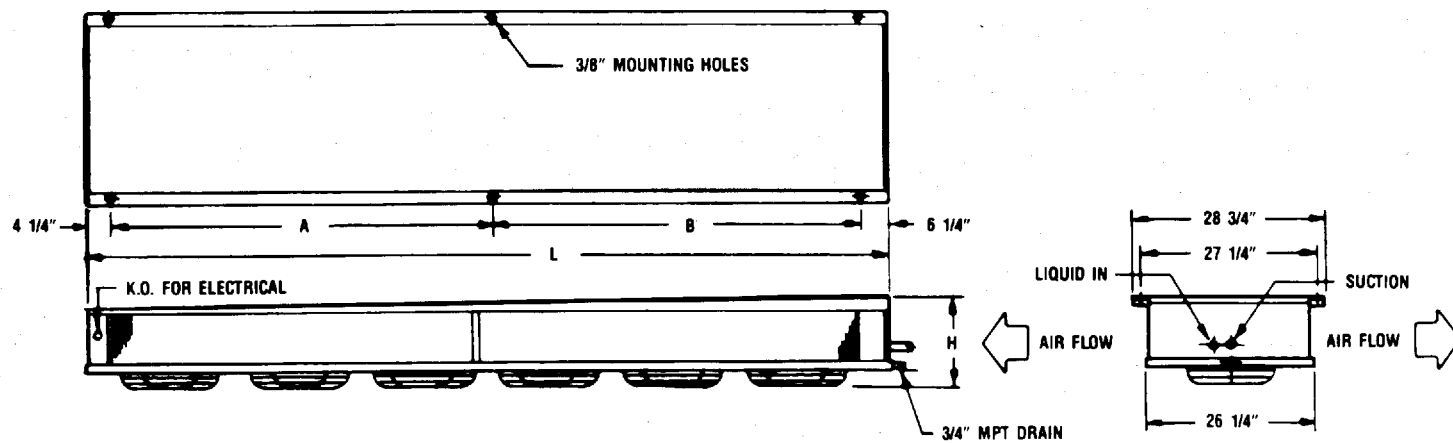
1. Based on R-22.
2. Optional PSC motors are available, contact factory.

DIMENSIONAL DATA

6 FPI	MODEL	Connections (in) (1)				Dimensions (in)				Refrig. Charge (lbs) (1)	Approx. Ship Weight (lbs)
		Suction O.D.	liquid FN	Ext. Equal. O.D.	Drain MPT	L	H	A	B		
HSA74	5/8	1/2	1/4	3/4	58 1/2	8	48		2.0	90	
HSA90	5/8	1/2	1/4	3/4	58 1/2	8	48		2.6	95	
HSA100	5/8	1/2	1/4	3/4	58 1/2	8	48		3.2	100	
HSA110	7/8	1/2	1/4	3/4	82 1/2	8 3/4	36	36	3.2	120	
HSA130	7/8	1/2	1/4	3/4	82 1/2	8 3/4	36	36	3.8	125	
HSA156	7/8	1/2	1/4	3/4	82 1/2	8 3/4	36	36	4.8	130	
HSA164	7/8	1/2	1/4	3/4	106 1/2	8 3/4	48	48	8.4	145	
HSA212	7/8	1/2	1/4	3/4	106 1/2	10 1/4	48	48	8.4	150	
HSA240	7/8	1/2	1/4	3/4	106 1/2	10 1/4	48	48	8.4	160	
HSA250	1 1/8	1/2	1/4	3/4	106 1/2	10 1/4	48	48	8.4	180	

4 FPI	HSA65	5/8	1/2	1/4	3/4	58 1/2	8	48		2.0	95
HSA85	5/8	1/2	1/4	3/4	58 1/2	8	48		2.6	100	
HSA95	5/8	1/2	1/4	3/4	58 1/2	8	48		3.2	105	
HSA103	7/8	1/2	1/4	3/4	82 1/2	8 3/4	36	36	3.2	125	
HSA123	7/8	1/2	1/4	3/4	82 1/2	8 3/4	36	36	3.8	130	
HSA142	7/8	1/2	1/4	3/4	82 1/2	8 3/4	36	36	4.8	135	
HSA159	7/8	1/2	1/4	3/4	106 1/2	8 3/4	48	48	8.4	150	
HSA193	7/8	1/2	1/4	3/4	106 1/2	10 1/4	48	48	8.4	155	
HSA218	7/8	1/2	1/4	3/4	106 1/2	10 1/4	48	48	8.4	165	
HSA233	1 1/8	1/2	1/4	3/4	106 1/2	10 1/4	48	48	8.4	185	

For your convenience the diagram originally here is enlarged, and is now a separate page that can be found just after this page in the Adobe document.



Specifications and dimensions are subject to change without notice.

KRAMER 14230 Lochridge Boulevard / Covington, GA / 30014
 Phone: 770-788-5800 Fax: 770-788-5820
www.kramerusa.net